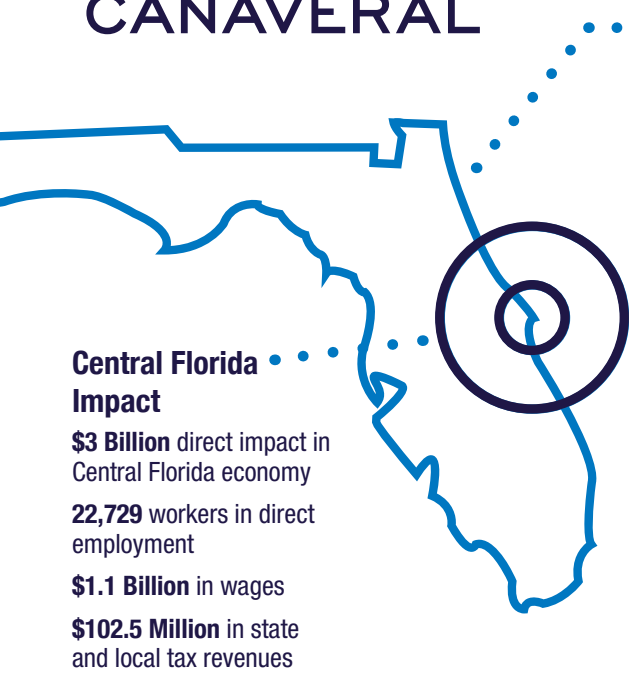




# PORT CANAVERAL

## 2023 Economic Contribution to Florida



**State Impact**

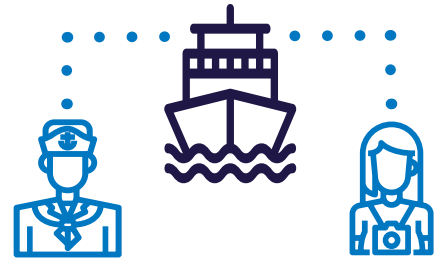
- \$6.1 Billion total economic impact
- 42,700 jobs
- \$2.1 Billion wage income
- \$189.5 Million state and local tax revenues (sales, use, excise) paid statewide

**Local Impact**

- \$2 Billion in total cruise tourism expenditures in Port Canaveral supported direct employment of 17,038 regional residents paying \$759.8 Million in annual wages

### Port Canaveral's Cruise Business Contributes to Local Tourism

Port Canaveral supported direct employment of 17,038 regional residents paying \$759.8 Million annual wages. Cruise lines, guests and crew visits generated \$2 Billion in tourism expenditures in Central Florida.



#### Crew Members

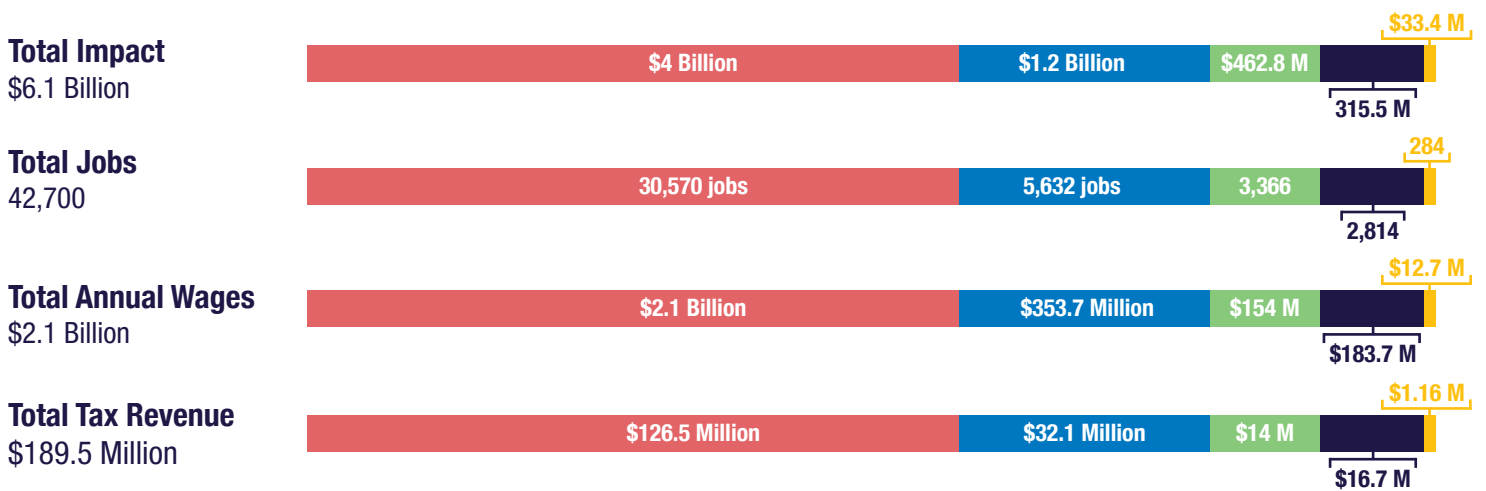
Of 1.2 Million crew arrivals, 353,400 will visit the Port Canaveral area and spent a total of \$38.9 Million. (\$110 per crew member spending ashore)

#### Cruise Guests

57% of cruise guests stayed 2.3 overnights pre or post-cruise in Port Canaveral area accommodations

### Total Economic Contribution, by Business Line

**CRUISE CARGO REAL ESTATE GOVERNMENT RECREATION**



Cruise lines sailing from Port Canaveral spent a total of \$982.3 Million throughout Central Florida.

\$622.7 Million in cargo direct expenditures support nearly 2,500 individuals earning \$179.4 Million in annual wages

Final sale or use of commodities flowing through Port Canaveral supports an additional 2,734 jobs paying about \$104 Million in annual wages

35,565 visitors to Port Canaveral's Jetty Park will spend on average 5 nights and \$870 across the area

