

Meeting Date August 23, 2017		AGENDA ITEM REQUEST	
		Section	Consent
		Item Number	7.B.6

Department	Engineering
------------	-------------

Requested Action:

Consideration of approving Change Order #1 to purchase order P19947 for Rush Construction Inc. under their 397 Challenger Road contract for the purchase and installation of a fueling system in an amount not to exceed \$278,902 (Patrick Hammond/Bill Crowe)

Summary Explanation & Background:

The new Maritime Facilities Center is in the final stages of construction with move in scheduled for late August. The Maritime Facilities Center will house a variety of Port departments including Fleet Maintenance. As part of the current relocation program the staff has evaluated the need to update the Port's current fueling system. The Port currently has two (2) 1,000 gallon capacity fuel tanks that were installed 15 years ago and work with a fuel management system that is labor intensive for data entry and tracking.



This proposed item is for the procurement and installation of a new fuel tank and new fuel management system. The new single fuel tank will be a 3,000 gallon split (2,000 gallon unleaded and 1,000 gallon diesel) double walled above ground tank. The larger capacity tank will allow for reduced number of refilling operations throughout the year as well as additional supply during natural disasters or emergency situations. The new fuel management system will allow for advance tracking of fuel usage as well as real time information output on other vehicle systems. This information will be used to track inventory and schedule preventative maintenance on port vehicles.

The fuel station will be relocated to the east end of the Maritime Center parking lot within a secured/access controlled area. Proposal includes installation of needed power and communication lines.

Financial Review by Pat Poston:	The total NTE amount of \$278,902 is included in the FY17 Capital Budget and no increase is required. [Budget item 2075 - Maritime Center & Tenant Imp.]
---------------------------------	--

Attachments: Change Order, Rush Proposal, Fuel System Map -- Capital Budget Project Sheet

Contract/Agreement:	Reviewed by General Counsel Yes <input type="checkbox"/> No <input checked="" type="checkbox"/>
	Reviewed by Port Attorney Yes <input type="checkbox"/> No <input checked="" type="checkbox"/>

Department Approval: Bill Crowe, P.E. Sr. Director, Engineering Construction & Facilities 	CEO Approval:  John W. Murray, CEO
--	--



**CANAVERAL PORT AUTHORITY
397 CHALLENGER ROAD PROJECT
RUSH CONSTRUCTION
CHANGE ORDER # 1**

Contract Total To Date **FROM:** \$1,537,903.00
JL# 2075-17022-201 / P19947

Item 1 Purchase and Installation of a fueling system **INCREASE:** \$278,902.00

TOTAL INCREASE: \$278,902.00

NEW CONTRACT TOTAL: \$1,816,805.00

GENERAL: No changes other than those listed above are authorized.
IN WITNESS WHEREOF, the parties hereto set their hands and seals this 23rd day of
August, 2017.

Inclusion of the Change Order # 1 is recommended by:

William E. Crowe, Senior Director, Facilities, Construction and Infrastructure

CANAVERAL PORT AUTHORITY

RUSH CONSTRUCTION

BY: _____
Thomas W. Weinberg

BY: _____
Title:

Chairman

Attest: _____
Jerry W. Allender

Attest: _____
Title:

Secretary/Treasurer

Port Canaveral
445 Challenger Road Suite 301 Cape Canaveral, Florida 32920 USA
321 /83.7831 888 767.8826 www.portcanaveral.com

Maritime Facilities Center - Secured Parking Fuel Tank

Port Canaveral, FL
Est. No. 16-130



RUSH Construction, INC
6285 VectorSpace Blvd
Titusville, FL 32780
M.(321) 604-1558 Tim Saunders - tsanders@rushinc.com
P.(321) 267-8100
www.rushinc.com

SCHEDULE OF VALUES

BID DATE: 08/10/17
TIME:

TAB	DESCRIPTION OF WORK	BASE BID
1	GENERAL REQUIREMENTS	19,393
2	SITE IMPROVEMENTS/DEMO	7,786
3	CONCRETE	15,284
4	METALS	49,000
5	EQUIPMENT	121,301
6	ELECTRICAL/FIRE ALARM	15,800
7	ELECTRONIC SAFETY & SECURITY	6,200
	TOTAL COST	234,764
	OVERHEAD	11,738
	SUBTOTAL	246,502
	FEE	9,860
	P. & P. BOND	256,362
	SUBTOTAL	2,564
		258,926
ALT #01	Provide 200A Nema 3R Generator Receptacle, 200A Nema 3R Manual Transfer Switch	ADD
ALT #02	MISC Comm Work Contingency	ADD
ADD		5,000
	REVISED GRAND TOTAL	268,902

Owner's Contingency: \$10,000
Total: \$278,902

ITEM #: 2250



Port Canaveral Capital Budget Project Sheet

PROJECT TITLE: Maritime Facilities Center - Fuel Management Upgrade

PROJECT DESCRIPTION:

The procurement and installation of a new fuel tank and new fuel management system. The new single fuel tank will be a 3,000 gallon split (2,000 gallon unleaded and 1,000 gallon diesel) double walled above ground tank. The larger capacity tank will allow for reduced number of refilling operations throughout the year as well as additional supply during natural disasters or emergency situations. The new fuel management system will allow for advance tracking of fuel usage as well as real time information output on other vehicle systems. This information will be used to track inventory and schedule preventative maintenance on port vehicles. Includes running need power and communication.

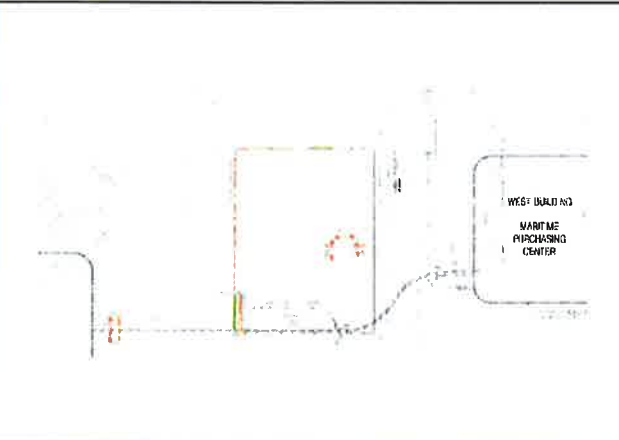
PROJECT PURPOSE:

As part of the current relocation program the staff has evaluated the need to update the Port's current fueling system. The Port currently has two (2) 1,000 gallon capacity fuel tanks that were installed 15 years ago and work with a fuel management system that is labor intensive for data entry and tracking.

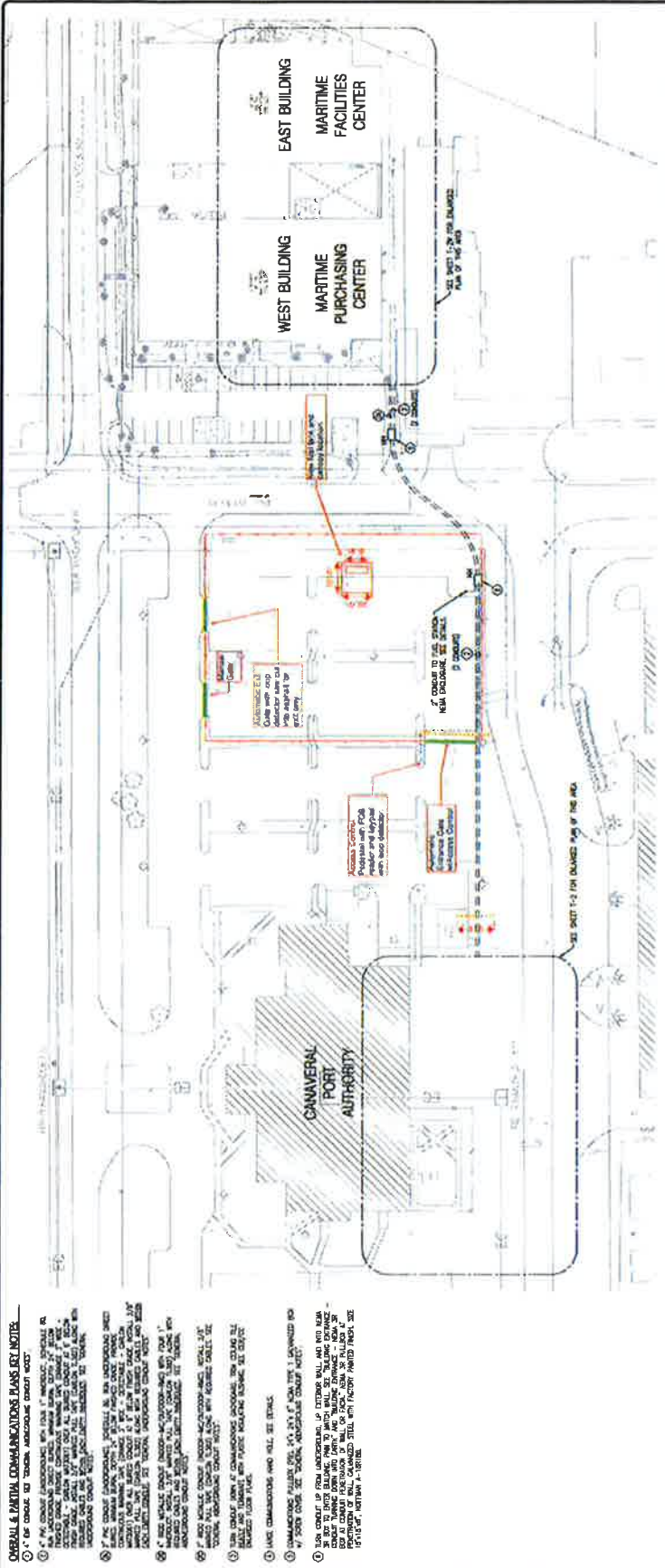
PRIORITY: 3

PROJECT BUDGET:

BUSINESS LINE: General Port



FORM:

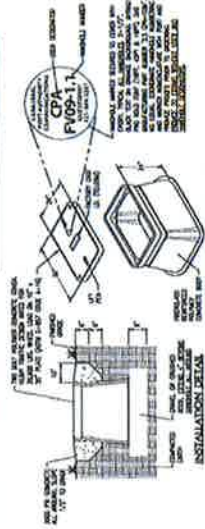


- OVERALL & PARTIAL COMMUNICATIONS PLANS KEY NOTES**
1. SEE SHEET T-1 FOR GENERAL COMMUNICATIONS CHART NOTES.
 2. ALL COMMUNICATIONS SHALL BE INSTALLED IN ACCORDANCE WITH THE COMMUNICATIONS CHART NOTES AND THE CANNAVERAL PORT AUTHORITY COMMUNICATIONS CHART NOTES.
 3. ALL COMMUNICATIONS SHALL BE INSTALLED IN ACCORDANCE WITH THE COMMUNICATIONS CHART NOTES AND THE CANNAVERAL PORT AUTHORITY COMMUNICATIONS CHART NOTES.
 4. ALL COMMUNICATIONS SHALL BE INSTALLED IN ACCORDANCE WITH THE COMMUNICATIONS CHART NOTES AND THE CANNAVERAL PORT AUTHORITY COMMUNICATIONS CHART NOTES.
 5. ALL COMMUNICATIONS SHALL BE INSTALLED IN ACCORDANCE WITH THE COMMUNICATIONS CHART NOTES AND THE CANNAVERAL PORT AUTHORITY COMMUNICATIONS CHART NOTES.
 6. ALL COMMUNICATIONS SHALL BE INSTALLED IN ACCORDANCE WITH THE COMMUNICATIONS CHART NOTES AND THE CANNAVERAL PORT AUTHORITY COMMUNICATIONS CHART NOTES.
 7. ALL COMMUNICATIONS SHALL BE INSTALLED IN ACCORDANCE WITH THE COMMUNICATIONS CHART NOTES AND THE CANNAVERAL PORT AUTHORITY COMMUNICATIONS CHART NOTES.
 8. ALL COMMUNICATIONS SHALL BE INSTALLED IN ACCORDANCE WITH THE COMMUNICATIONS CHART NOTES AND THE CANNAVERAL PORT AUTHORITY COMMUNICATIONS CHART NOTES.
 9. ALL COMMUNICATIONS SHALL BE INSTALLED IN ACCORDANCE WITH THE COMMUNICATIONS CHART NOTES AND THE CANNAVERAL PORT AUTHORITY COMMUNICATIONS CHART NOTES.
 10. ALL COMMUNICATIONS SHALL BE INSTALLED IN ACCORDANCE WITH THE COMMUNICATIONS CHART NOTES AND THE CANNAVERAL PORT AUTHORITY COMMUNICATIONS CHART NOTES.

OVERALL COMMUNICATIONS SITE PLAN
SCALE: 1" = 40'-0"

CONCRETE HANDHOLE
PLEASE REFER TO THE COMMUNICATIONS CHART FOR THE LOCATION OF ALL CONCRETE HANDHOLES. THE HANDHOLES SHALL BE INSTALLED IN ACCORDANCE WITH THE COMMUNICATIONS CHART NOTES AND THE CANNAVERAL PORT AUTHORITY COMMUNICATIONS CHART NOTES.

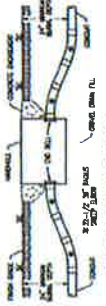
OUTLET CONDUIT
SEE COMMUNICATIONS CHART FOR THE LOCATION OF ALL OUTLET CONDUITS. THE CONDUITS SHALL BE INSTALLED IN ACCORDANCE WITH THE COMMUNICATIONS CHART NOTES AND THE CANNAVERAL PORT AUTHORITY COMMUNICATIONS CHART NOTES.



CONCRETE HANDHOLE
1. THE HANDHOLES SHALL BE INSTALLED IN ACCORDANCE WITH THE COMMUNICATIONS CHART NOTES AND THE CANNAVERAL PORT AUTHORITY COMMUNICATIONS CHART NOTES.
2. THE HANDHOLES SHALL BE INSTALLED IN ACCORDANCE WITH THE COMMUNICATIONS CHART NOTES AND THE CANNAVERAL PORT AUTHORITY COMMUNICATIONS CHART NOTES.
3. THE HANDHOLES SHALL BE INSTALLED IN ACCORDANCE WITH THE COMMUNICATIONS CHART NOTES AND THE CANNAVERAL PORT AUTHORITY COMMUNICATIONS CHART NOTES.

OVERALL COMMUNICATIONS LEGEND

- CONCRETE HANDHOLE
- CONCRETE HANDHOLE
- CONCRETE HANDHOLE
- CONCRETE HANDHOLE
- CONCRETE HANDHOLE
- CONCRETE HANDHOLE
- CONCRETE HANDHOLE
- CONCRETE HANDHOLE
- CONCRETE HANDHOLE
- CONCRETE HANDHOLE



TYPICAL HANDHOLE CONDUIT ENTRY DETAIL
1. THE HANDHOLES SHALL BE INSTALLED IN ACCORDANCE WITH THE COMMUNICATIONS CHART NOTES AND THE CANNAVERAL PORT AUTHORITY COMMUNICATIONS CHART NOTES.
2. THE HANDHOLES SHALL BE INSTALLED IN ACCORDANCE WITH THE COMMUNICATIONS CHART NOTES AND THE CANNAVERAL PORT AUTHORITY COMMUNICATIONS CHART NOTES.
3. THE HANDHOLES SHALL BE INSTALLED IN ACCORDANCE WITH THE COMMUNICATIONS CHART NOTES AND THE CANNAVERAL PORT AUTHORITY COMMUNICATIONS CHART NOTES.

Communications General Project Notes

1. THE COMMUNICATIONS SHALL BE INSTALLED IN ACCORDANCE WITH THE COMMUNICATIONS CHART NOTES AND THE CANNAVERAL PORT AUTHORITY COMMUNICATIONS CHART NOTES.
2. THE COMMUNICATIONS SHALL BE INSTALLED IN ACCORDANCE WITH THE COMMUNICATIONS CHART NOTES AND THE CANNAVERAL PORT AUTHORITY COMMUNICATIONS CHART NOTES.
3. THE COMMUNICATIONS SHALL BE INSTALLED IN ACCORDANCE WITH THE COMMUNICATIONS CHART NOTES AND THE CANNAVERAL PORT AUTHORITY COMMUNICATIONS CHART NOTES.
4. THE COMMUNICATIONS SHALL BE INSTALLED IN ACCORDANCE WITH THE COMMUNICATIONS CHART NOTES AND THE CANNAVERAL PORT AUTHORITY COMMUNICATIONS CHART NOTES.
5. THE COMMUNICATIONS SHALL BE INSTALLED IN ACCORDANCE WITH THE COMMUNICATIONS CHART NOTES AND THE CANNAVERAL PORT AUTHORITY COMMUNICATIONS CHART NOTES.
6. THE COMMUNICATIONS SHALL BE INSTALLED IN ACCORDANCE WITH THE COMMUNICATIONS CHART NOTES AND THE CANNAVERAL PORT AUTHORITY COMMUNICATIONS CHART NOTES.
7. THE COMMUNICATIONS SHALL BE INSTALLED IN ACCORDANCE WITH THE COMMUNICATIONS CHART NOTES AND THE CANNAVERAL PORT AUTHORITY COMMUNICATIONS CHART NOTES.
8. THE COMMUNICATIONS SHALL BE INSTALLED IN ACCORDANCE WITH THE COMMUNICATIONS CHART NOTES AND THE CANNAVERAL PORT AUTHORITY COMMUNICATIONS CHART NOTES.
9. THE COMMUNICATIONS SHALL BE INSTALLED IN ACCORDANCE WITH THE COMMUNICATIONS CHART NOTES AND THE CANNAVERAL PORT AUTHORITY COMMUNICATIONS CHART NOTES.
10. THE COMMUNICATIONS SHALL BE INSTALLED IN ACCORDANCE WITH THE COMMUNICATIONS CHART NOTES AND THE CANNAVERAL PORT AUTHORITY COMMUNICATIONS CHART NOTES.

GENERAL CONCRETE HANDHOLE NOTE
ALL CONCRETE HANDHOLES SHALL BE INSTALLED IN ACCORDANCE WITH THE COMMUNICATIONS CHART NOTES AND THE CANNAVERAL PORT AUTHORITY COMMUNICATIONS CHART NOTES. THE HANDHOLES SHALL BE INSTALLED IN ACCORDANCE WITH THE COMMUNICATIONS CHART NOTES AND THE CANNAVERAL PORT AUTHORITY COMMUNICATIONS CHART NOTES.

INSTALLATION NOTE
ALL COMMUNICATIONS SHALL BE INSTALLED IN ACCORDANCE WITH THE COMMUNICATIONS CHART NOTES AND THE CANNAVERAL PORT AUTHORITY COMMUNICATIONS CHART NOTES. THE COMMUNICATIONS SHALL BE INSTALLED IN ACCORDANCE WITH THE COMMUNICATIONS CHART NOTES AND THE CANNAVERAL PORT AUTHORITY COMMUNICATIONS CHART NOTES.



Premier
Engineering Group, LLC
SCALE: 1" = 40'-0"