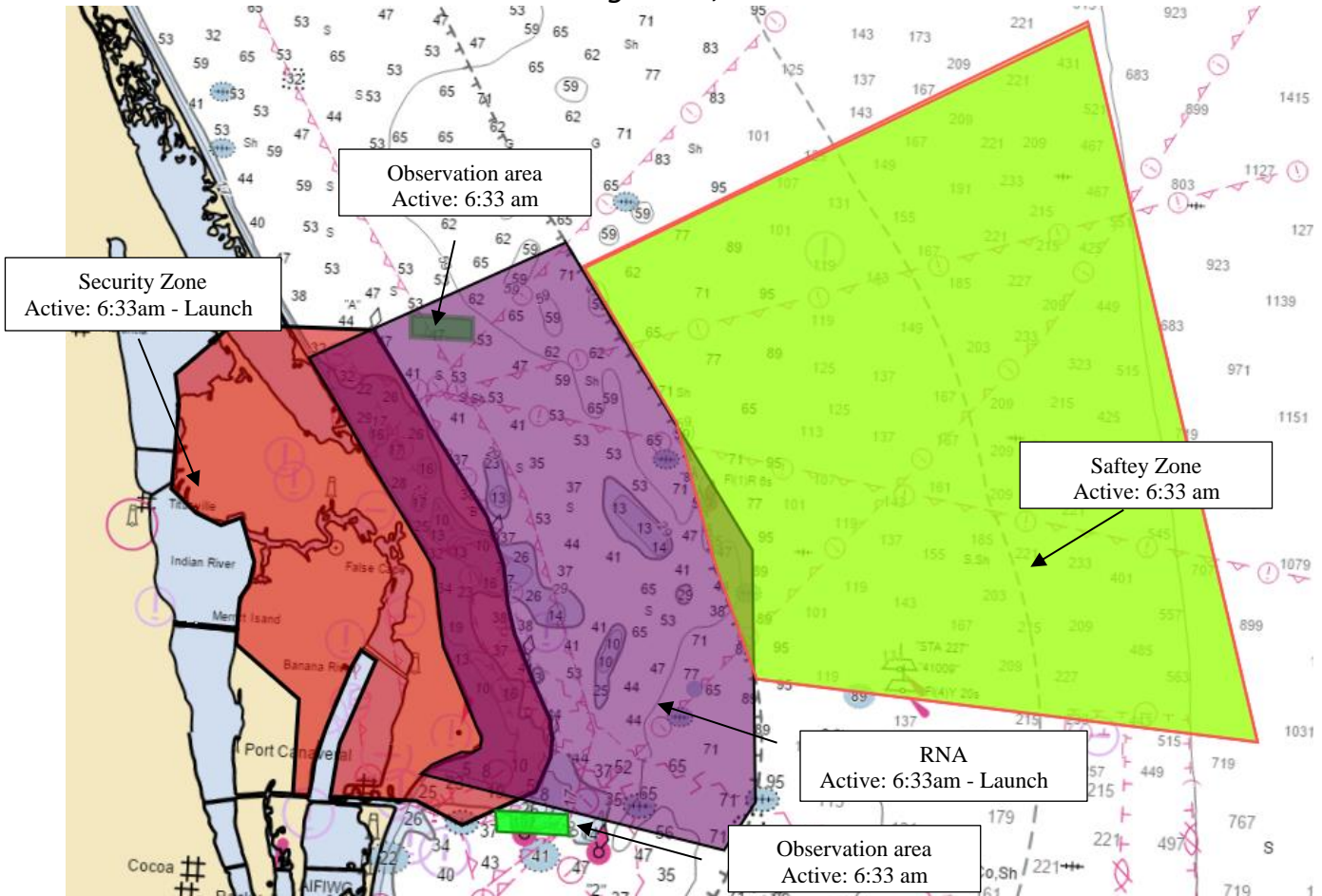




UNITED STATES COAST GUARD SECTOR JACKSONVILLE SPACE LAUNCH DELTA 45



Space Operations Rocket Launch Advisory SPACE LAUNCH SYSTEM Artemis-1 August 29, 2022



WARNING

RNA/Security Zone

No person or vessel may enter, pass through or remain in the regulated navigation area(RNA) or security zone unless authorized by the Captain of the Port under the authority of 33 CFR 160.111 and Title 46, United States Code (USC), Parts 70002 and 70036. Failure to comply is punishable by a fine of not more than \$250,000 or imprisonment for not more than six years, or both.

Surveillance Area

Extremely hazardous conditions will be present within the surveillance areas. Mariners are strongly advised to avoid these areas while active.

For up to date Launch Information:

1. Scan the QR Code or copy link
2. Go to Upcoming Launches near the bottom of the page
3. Open Launch Hazard Area

<https://www.patrick.spaceforce.mil/>



USCG Command Center Jacksonville: (904) 714-7557
USSF Launch Information Recorded Line: 1-800-470-7232

Mariners are advised to remain clear of all zones during the time of activation

Detailed Launch Information can be obtained using Coast Guard channel 16 or FM81A and Notice to Mariners @ <https://www.navcen.uscg.gov/?pageName=lnmDistrict®ion=7>



UNITED STATES COAST GUARD SECTOR JACKSONVILLE
SPACE LAUNCH DELTA 45



Launch Zone Coordinates

Regulated Navigation Area	
Latitude (dms)	Longitude (dms)
28° 43' 21.4 " N	80° 40' 56.2" W
28° 48' 53.4" N	80° 28' 42.7" W
28° 25' 20.7" N	80° 17' 58.1" W
28° 23' 13.5 " N	80° 19' 22.1" W
28° 25' 47.5 " N	80° 34' 20.8" W

Safety Zone	
Latitude (dms)	Longitude (dms)
28° 47' 51 " N	80° 27' 43.4" W
28° 59' 24.5" N	80° 03' 37.4" W
28° 29' 1.2" N	79° 53' 33.7" W
28° 30' 38.3" N	80° 18' 13.9" W

Observation Area (South)	
Latitude (dms)	Longitude (dms)
28° 24' 24 " N	80° 30' 36.9" W
28° 24' 24" N	80° 27' 4.2" W
28° 23' 30" N	80° 26' 58.5" W
28° 23' 30" N	80° 30' 29.2" W

Observation Area (North)	
Latitude (dms)	Longitude (dms)
28° 45' 25.4" N	80° 36' 4.2" W
28° 45' 25.3" N	80° 33' 2.8" W
28° 44' 30" N	80° 32' 59.4" W
28° 44' 30" N	80° 36' 0.0" W

Security Zone:

A detailed description of the Security Zone can be found in 33 Code of Federal Regulations (CFR) 165.701 or online at:
[eCFR :: 33 CFR Part 165 -- Regulated Navigation Areas and Limited Access Areas](#)



U.S. Space Force
Space Launch Delta 45 Public Affairs Office
1201 Edward H. White II Street
Patrick Space Force Base, Florida, 32925-3237

Aug. 22, 2022

Community Advisory

Launch Day Traffic Alert for Artemis I, Aug. 29

CAPE CANAVERAL SPACE FORCE STATION, FLORIDA – The Space Coast is anticipating between 100,000-200,000 people to visit Brevard County for the Artemis I launch on August 29, 2022, with a 2-hour launch window opening at 08:33 AM EDT.

Important Notes for Cocoa Beach Residents and Visitors: State Road A1A (Cocoa Beach) - NO LEFT TURN from northbound A1A to State Road 520 westbound. Motorists on A1A will proceed northbound to SR 528 or U-turn at George King. Southbound should proceed to SR 404 Pineda Causeway to US Highway 1 or I-95.

The following traffic tips are courtesy of <https://www.visitspacecoast.com/launch-resources>

- If you live or work in the north, central, and beachside areas, plan accordingly and stay off the roadways if possible to avoid traffic congestion.
- If you must travel along these corridors, please plan for extra commute time to work and school.
- Consider running errands over the weekend before the launch to avoid traffic.
- ALWAYS watch for and yield to pedestrians/bicyclists crossing. There will be heavy foot traffic especially along our beaches.
- Obey ALL traffic laws. Do not run red lights, speed, or drive distracted.
- Once the launch is completed traffic will be funneled from East on SR 528 to A1A South and then to SR 520.

For questions regarding Space Launch Delta 45 Public Affairs Community Engagement, contact Heidi Hunt at Heidi.Hunt.1@Spaceforce.mil.

Very Respectfully,

Heidi M. Hunt, Department of the Air Force
Chief of Community Engagement
Social Media @SpaceLaunchDelta45
Patrick Space Force Base and Cape Canaveral Space Force Station, Florida
Office: (321) 494-5933
Cell: (321) 831-0170

