



# Hurricane Season 2026

*It Only Takes One*



**Will Ulrich**

*Warning Coordination Meteorologist*

National Weather Service

Weather Forecast Office

Melbourne, FL



- **National Weather Service Overview**
- **Tropical Storms & Hurricanes Basics**
- **NWS Products & Services**
- **A Recap of 2025**
- **Looking Ahead To 2026**

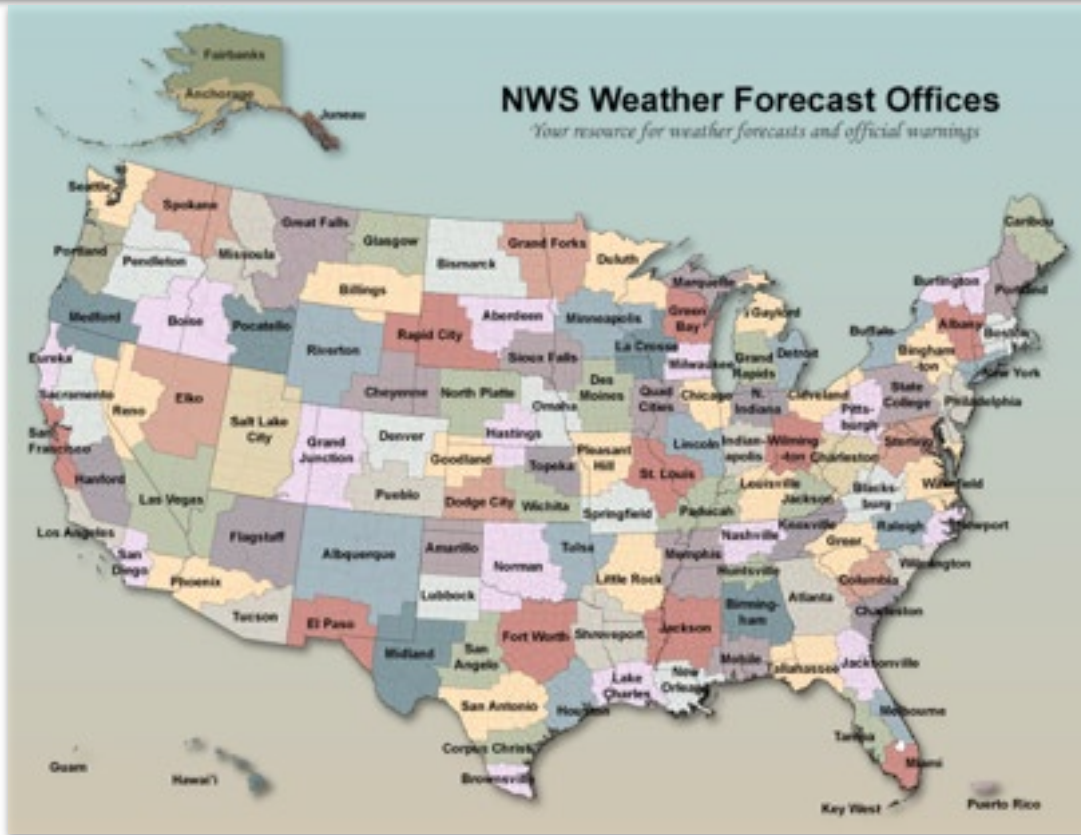
# National Weather Service



WEATHER FORECAST OFFICE

Melbourne Florida

## An Overview



**Weather Forecast Offices**

**123 across the country**

**each staffed with 20-25 employees**

**operating 24 hours a day, 7 days a week**



# National Weather Service



WEATHER FORECAST OFFICE

Melbourne Florida

## Accessing Our Information

### National

weather.gov



### Local

weather.gov/melbourne



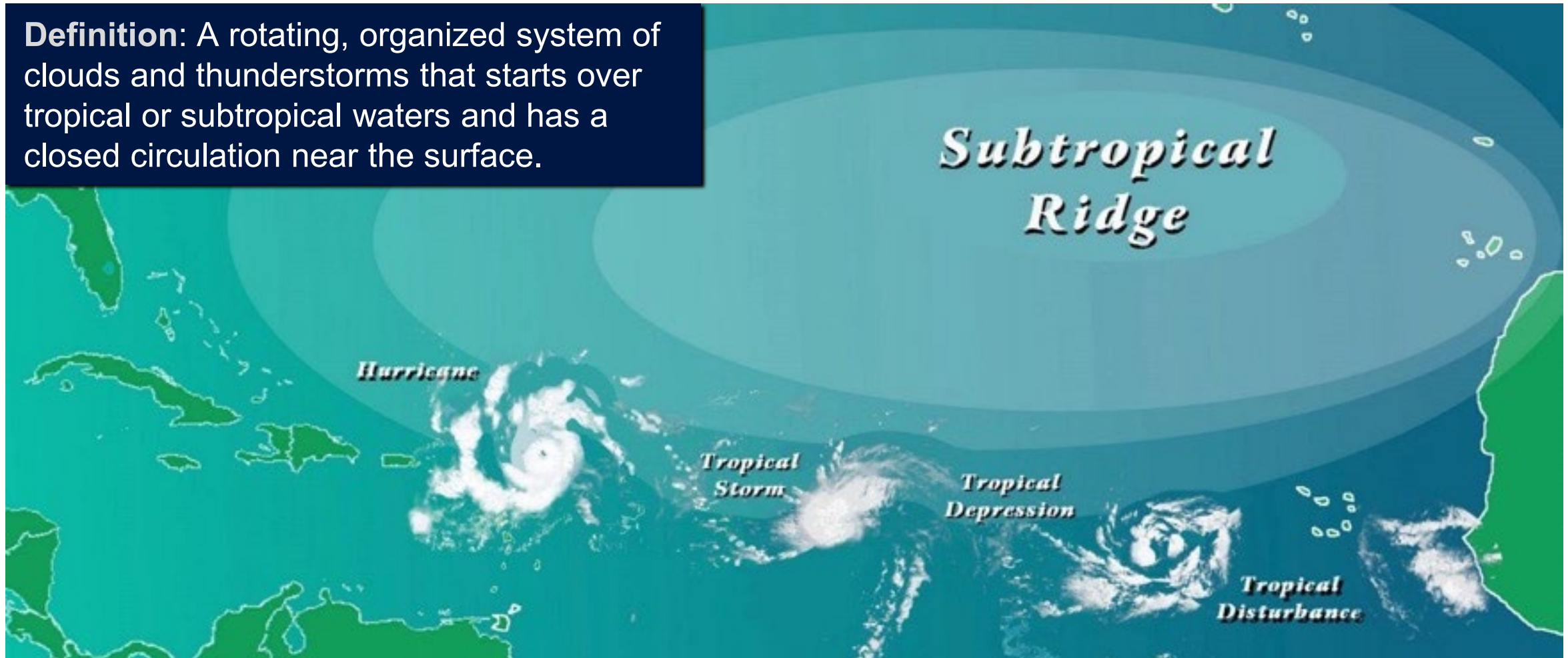
- **National Weather Service Overview**
- Tropical Storm & Hurricane Basics
- **NWS Products & Services**
- **A Recap of 2025**
- **Looking Ahead To 2026**

# Tropical Cyclones



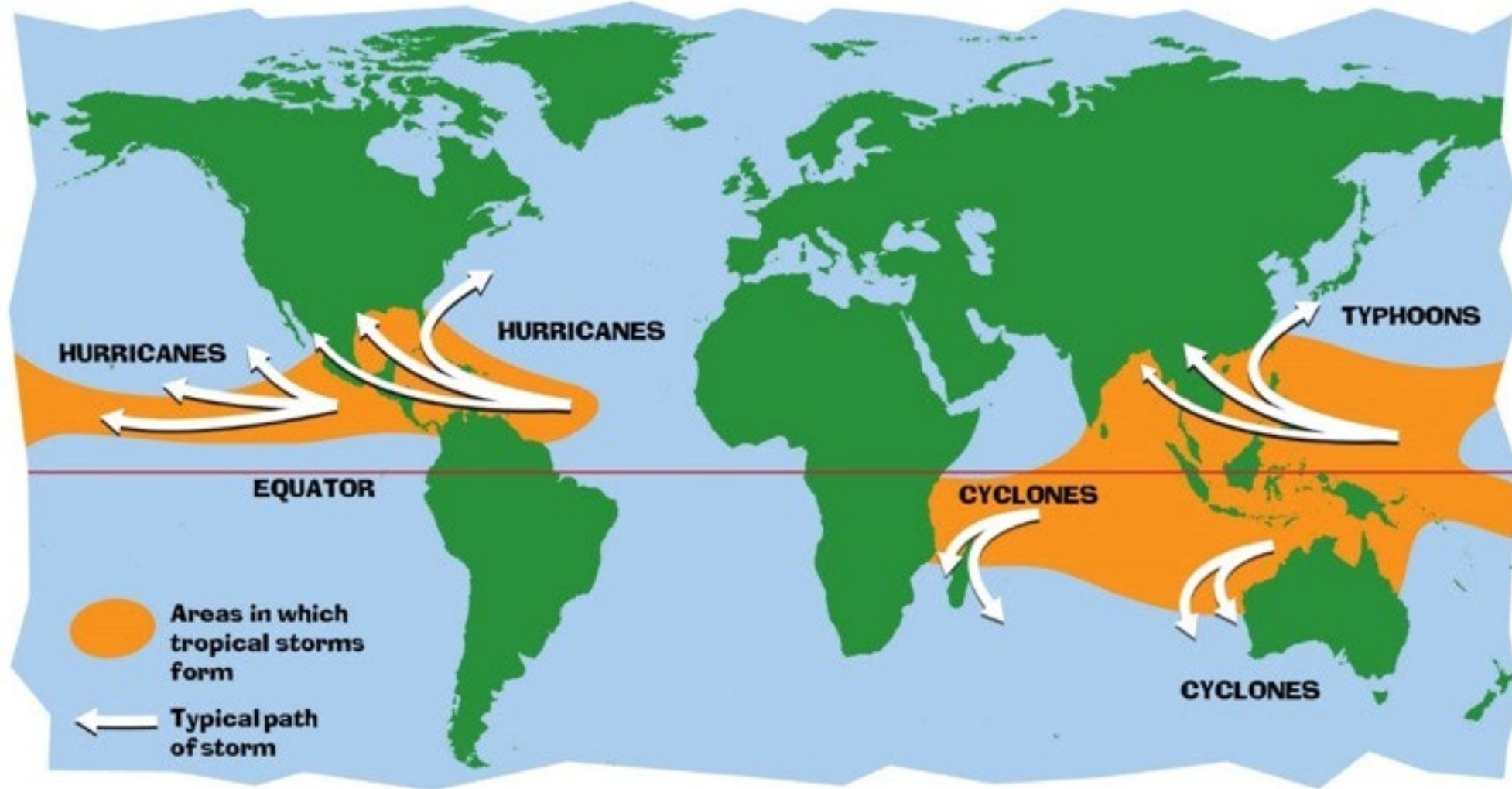
## A Broad Term

**Definition:** A rotating, organized system of clouds and thunderstorms that starts over tropical or subtropical waters and has a closed circulation near the surface.



# Tropical Cyclones

## Development Regions & Naming Conventions



# Tropical Cyclones

Don't Judge A Book By Its Cover



WEATHER FORECAST OFFICE

Melbourne Florida

## Tropical Cyclones Come in All Shapes & Sizes!

### Tropical Depression

(winds at or below 38 mph)



### Hurricane

(winds at or above 74 mph)



### Tropical Storm

(winds between 39 – 73 mph)



### Major Hurricane

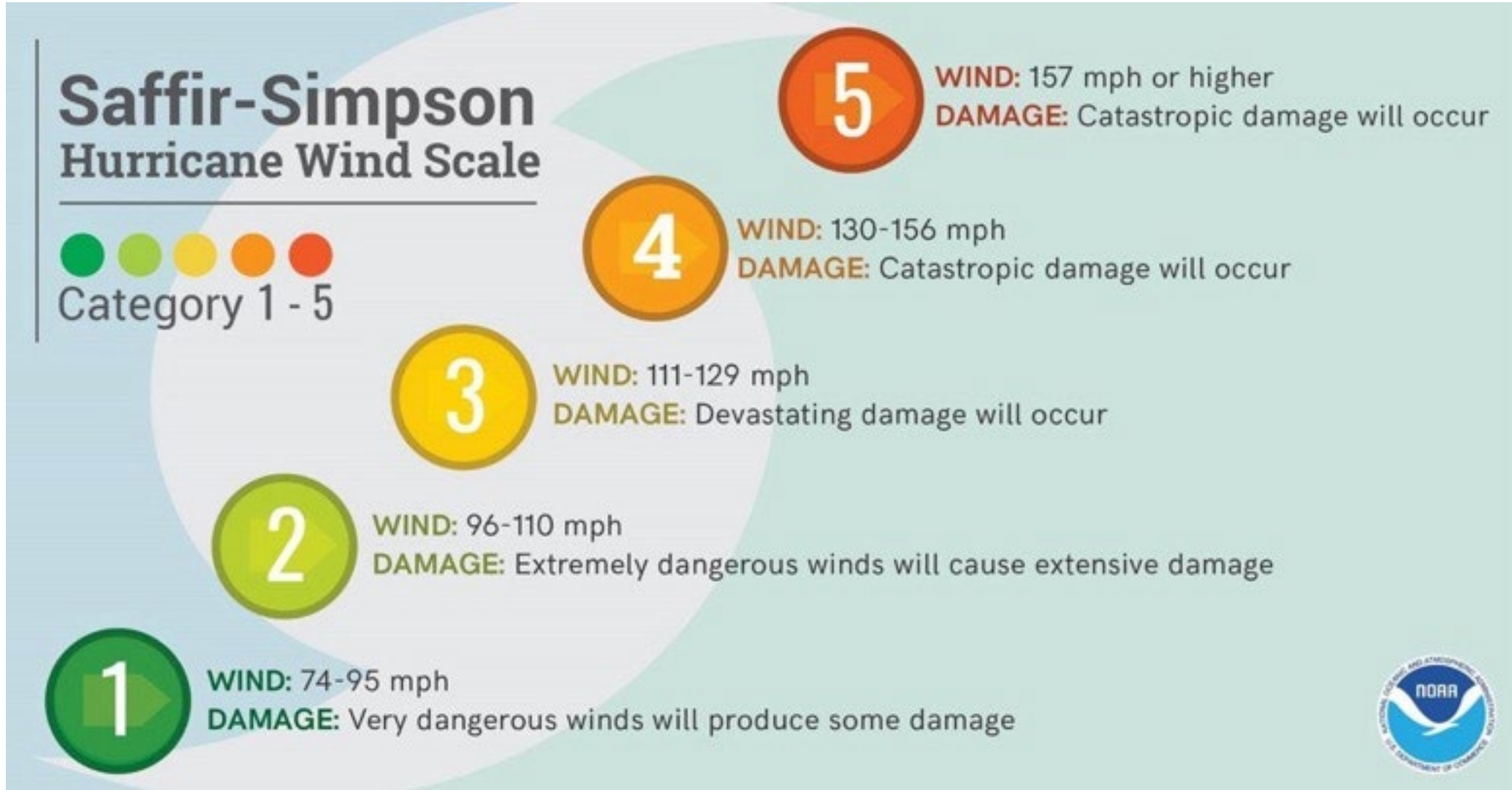
(winds at or above 111 mph)



# Tropical Cyclones



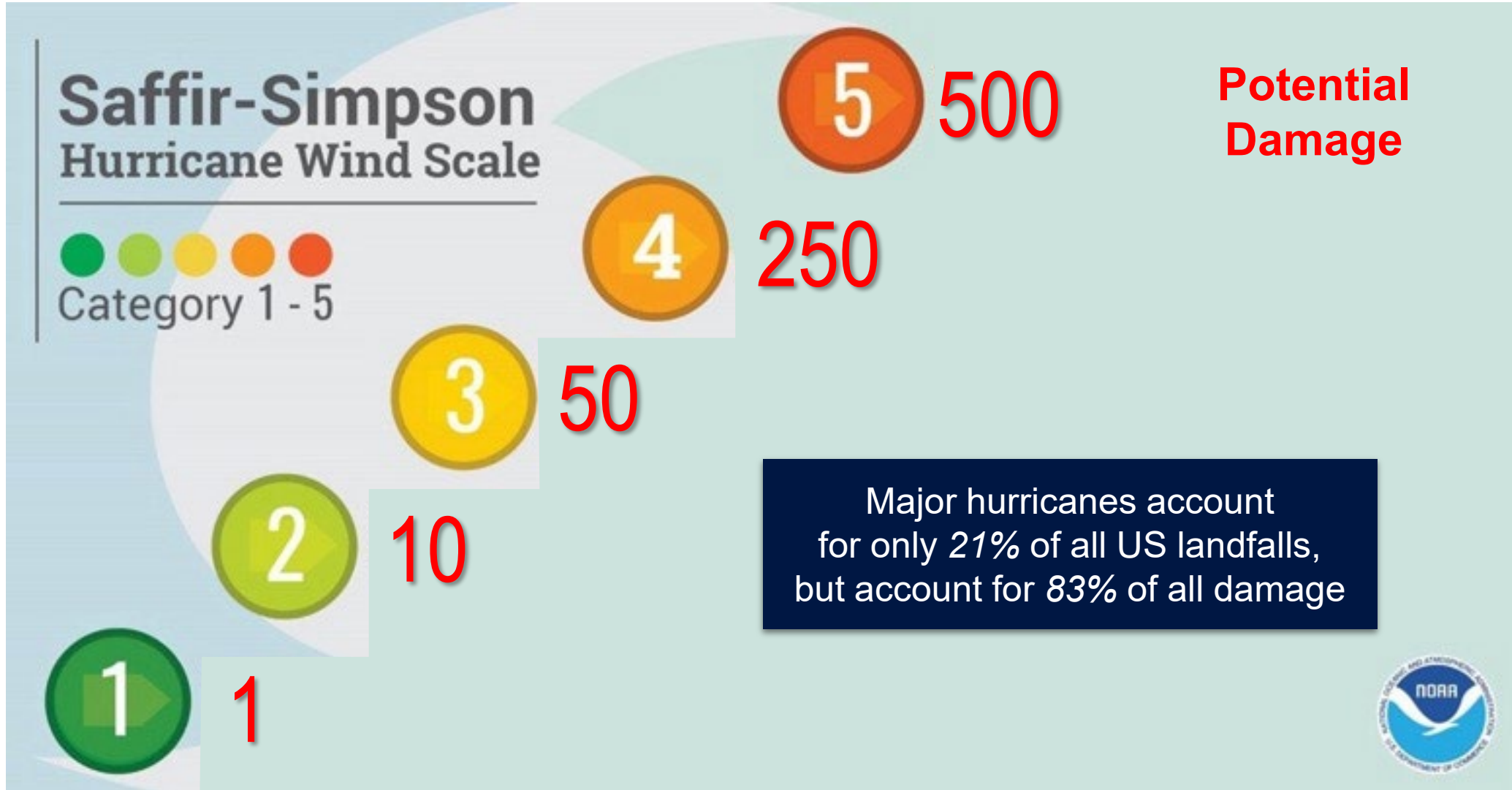
Rated Based On Wind Threat Only



# Tropical Cyclones



Rated Based On Wind Threat Only



# Tropical Cyclones

A Multitude Of Hazards



WEATHER FORECAST OFFICE

Melbourne Florida

All tropical cyclones can produce one or a combination of these hazards!

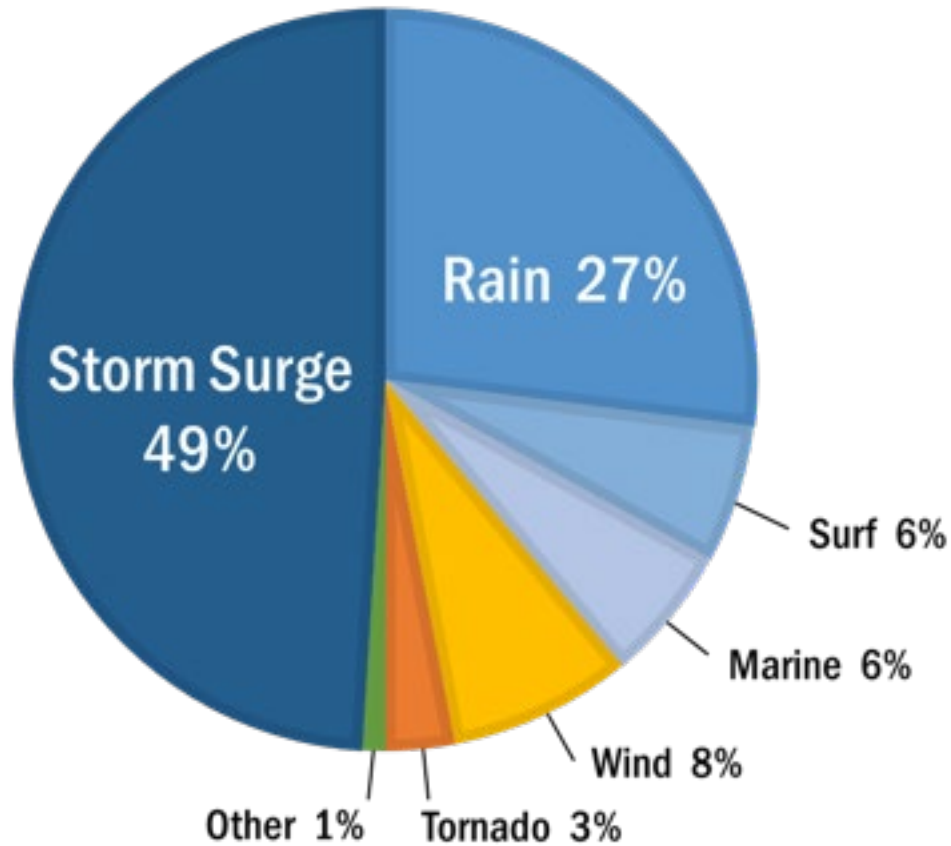


# Tropical Cyclones

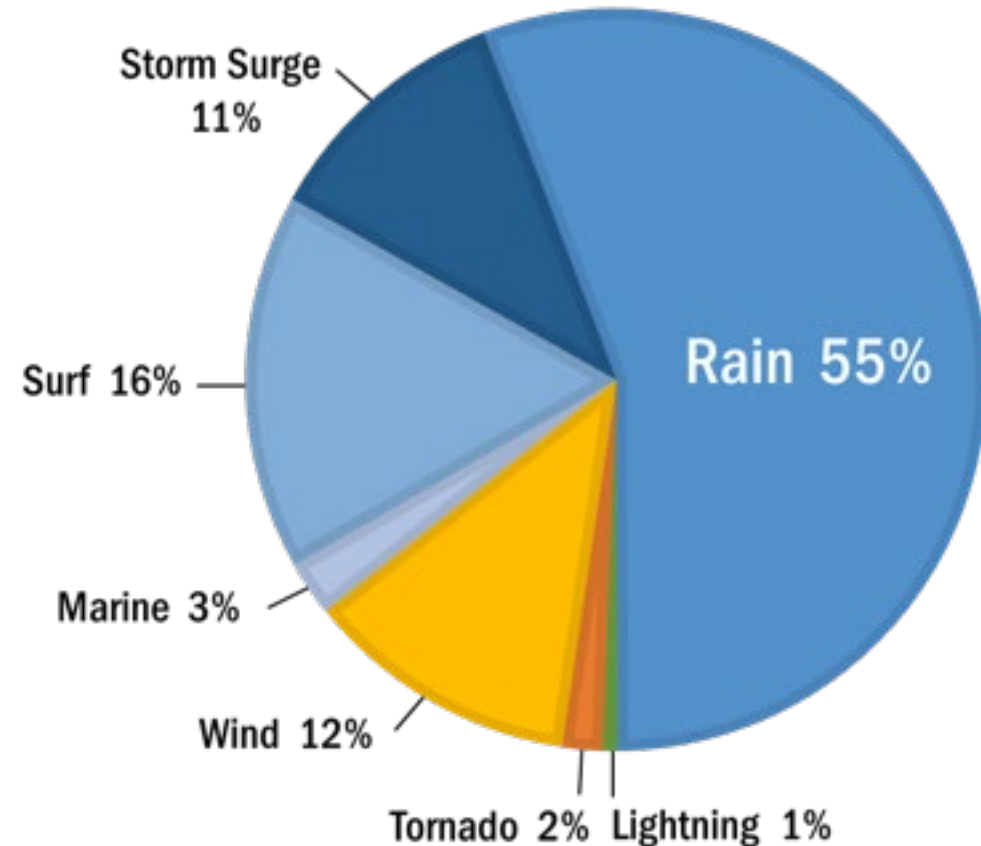
## Direct Fatalities By The Numbers



### 1963 to 2012



### 2013 to 2023

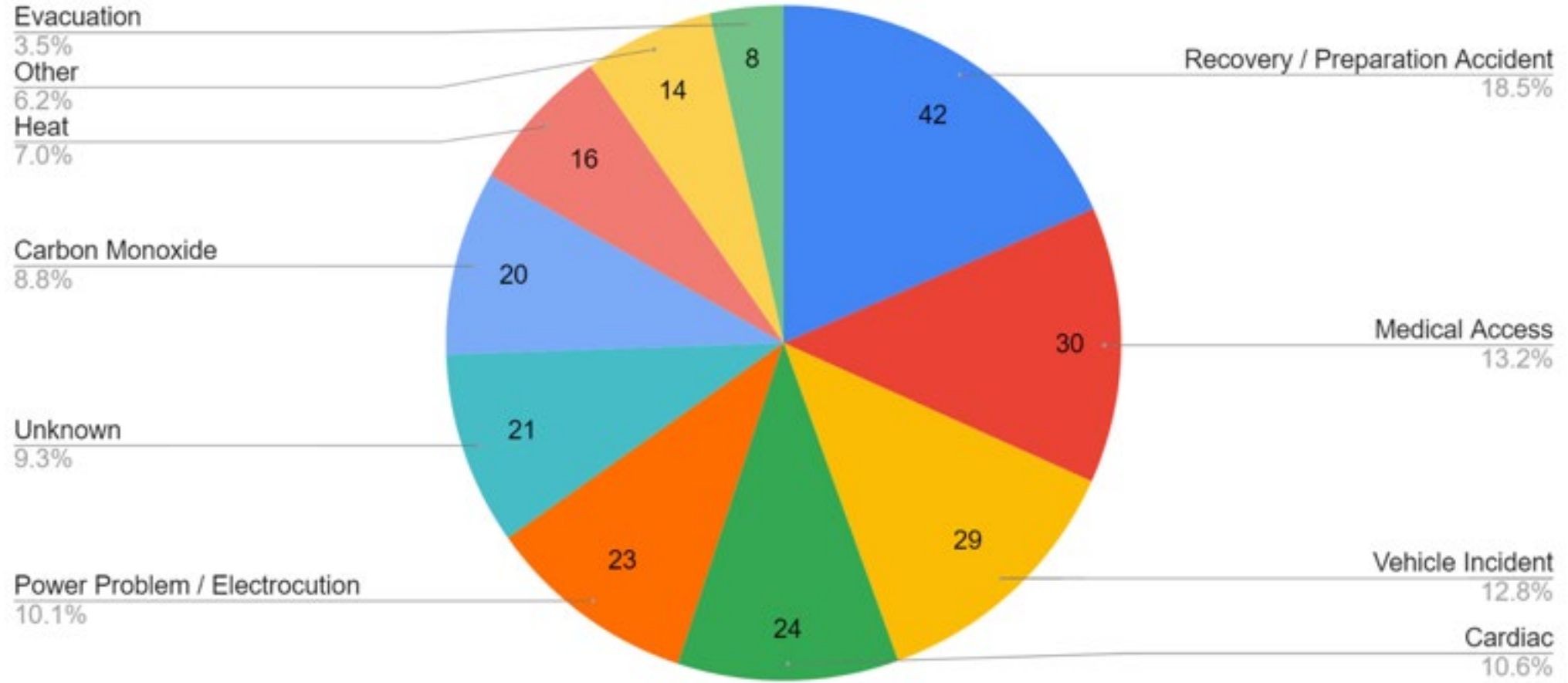


# Tropical Cyclones

## Indirect Fatalities By The Numbers



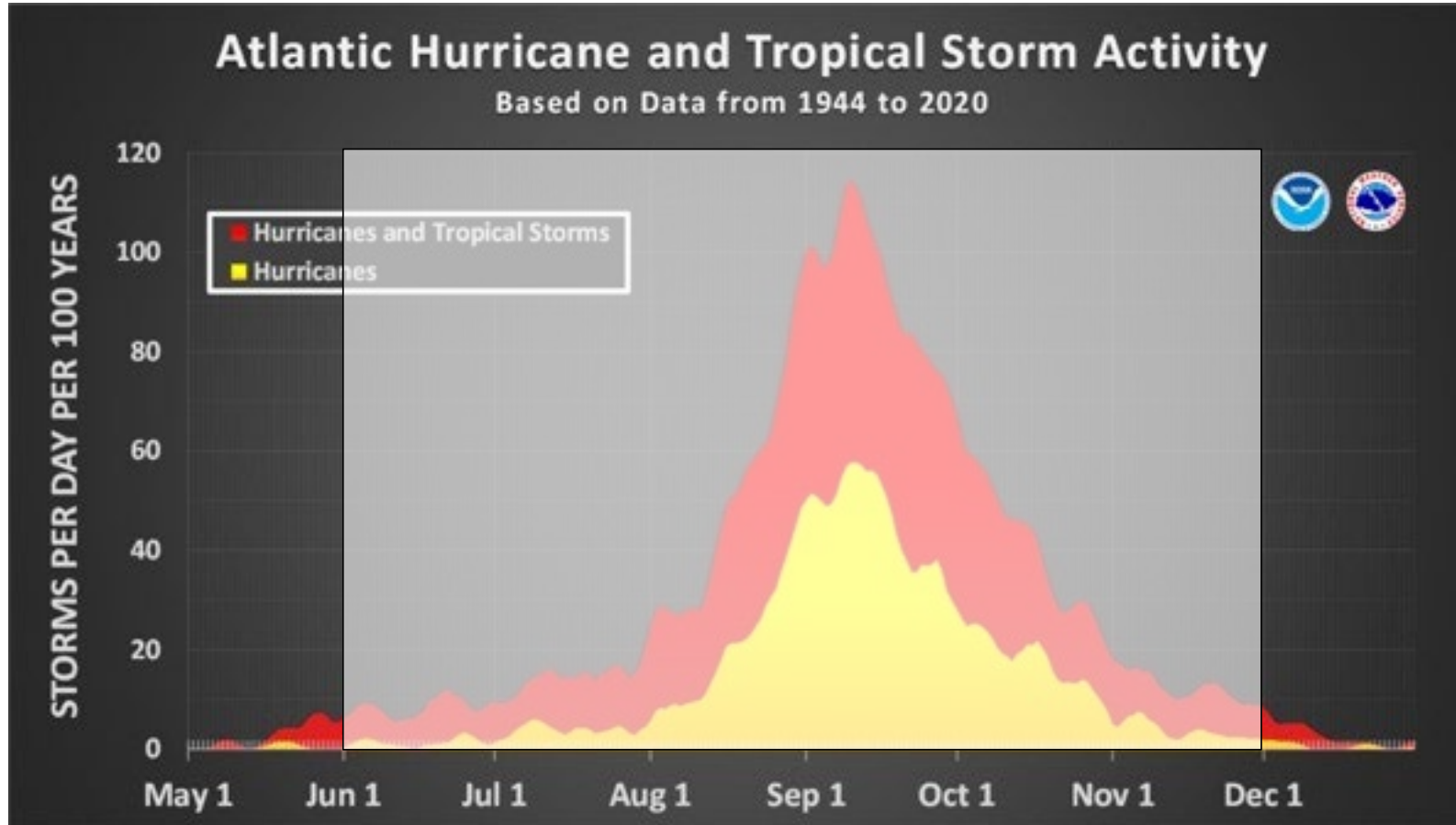
### Florida Indirect Fatalities 2013-2023



# Tropical Cyclones



## Seasonality

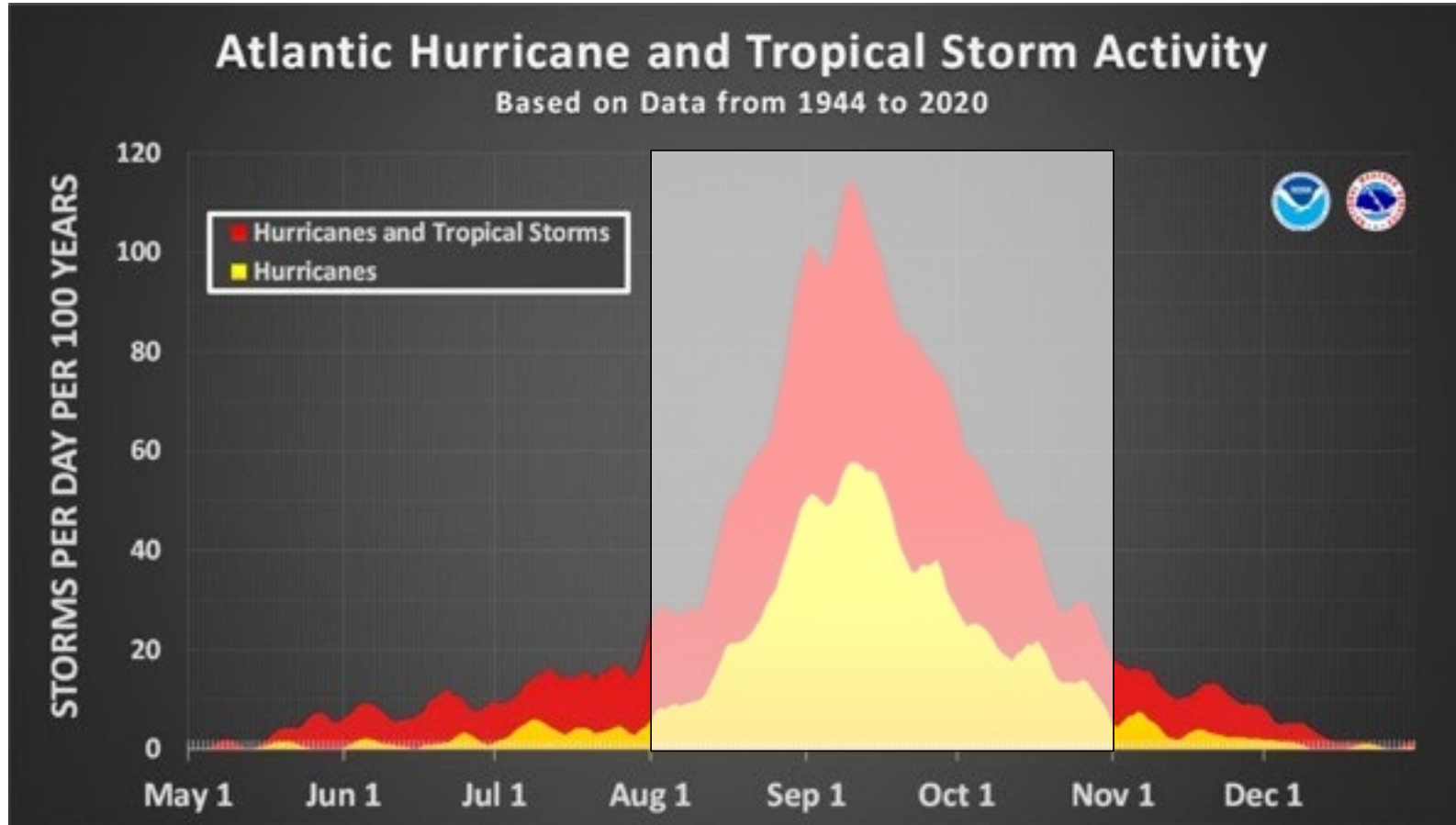


**June 1<sup>st</sup>-November 30<sup>th</sup>  
Encompasses 97% of All Activity**

# Tropical Cyclones



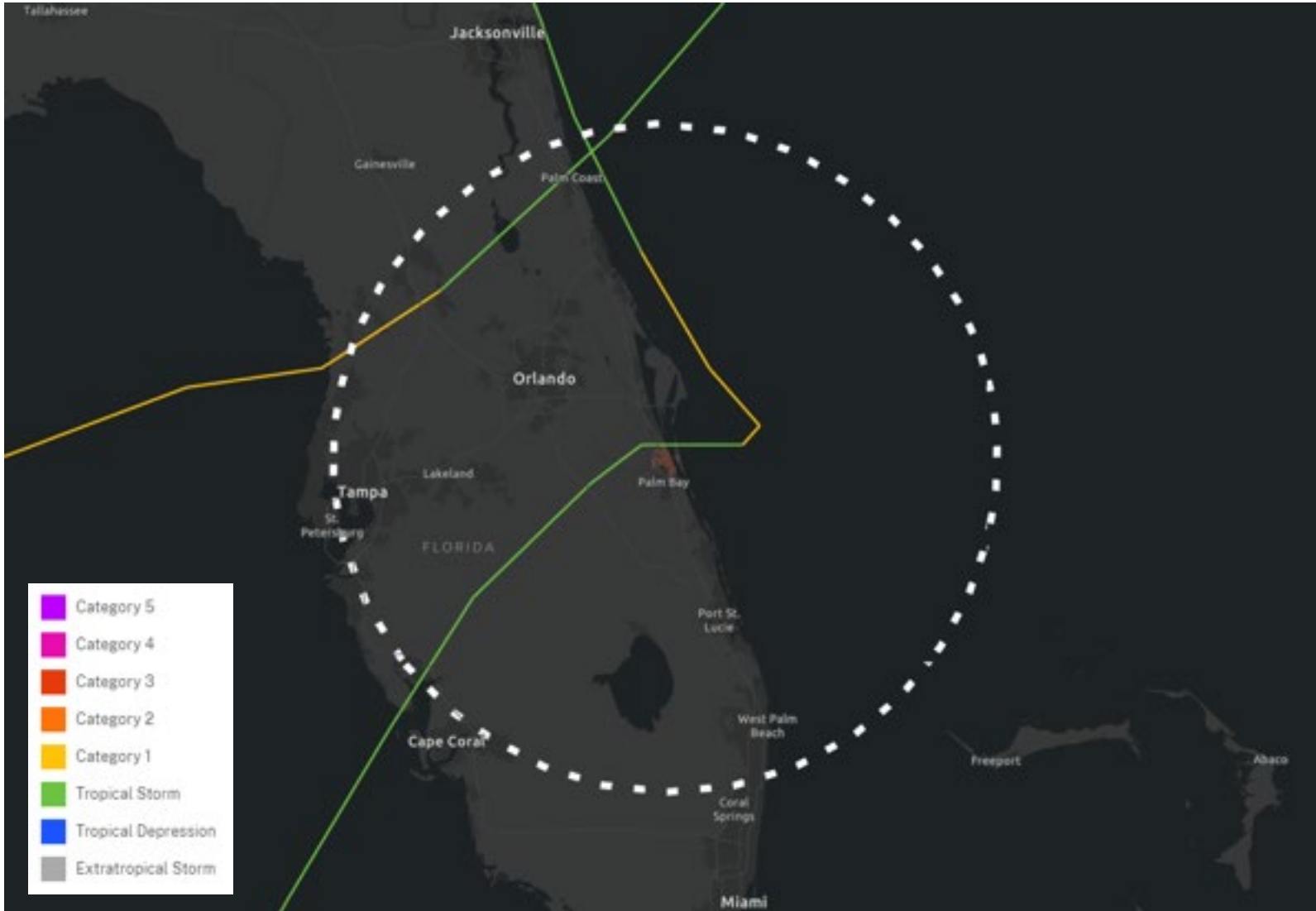
## Seasonality



**August 1<sup>st</sup>-October 31<sup>st</sup>**  
**>85% of Tropical Storms & Hurricanes Form**

# Tropical Cyclones

## June Hurricanes (1851-2025)

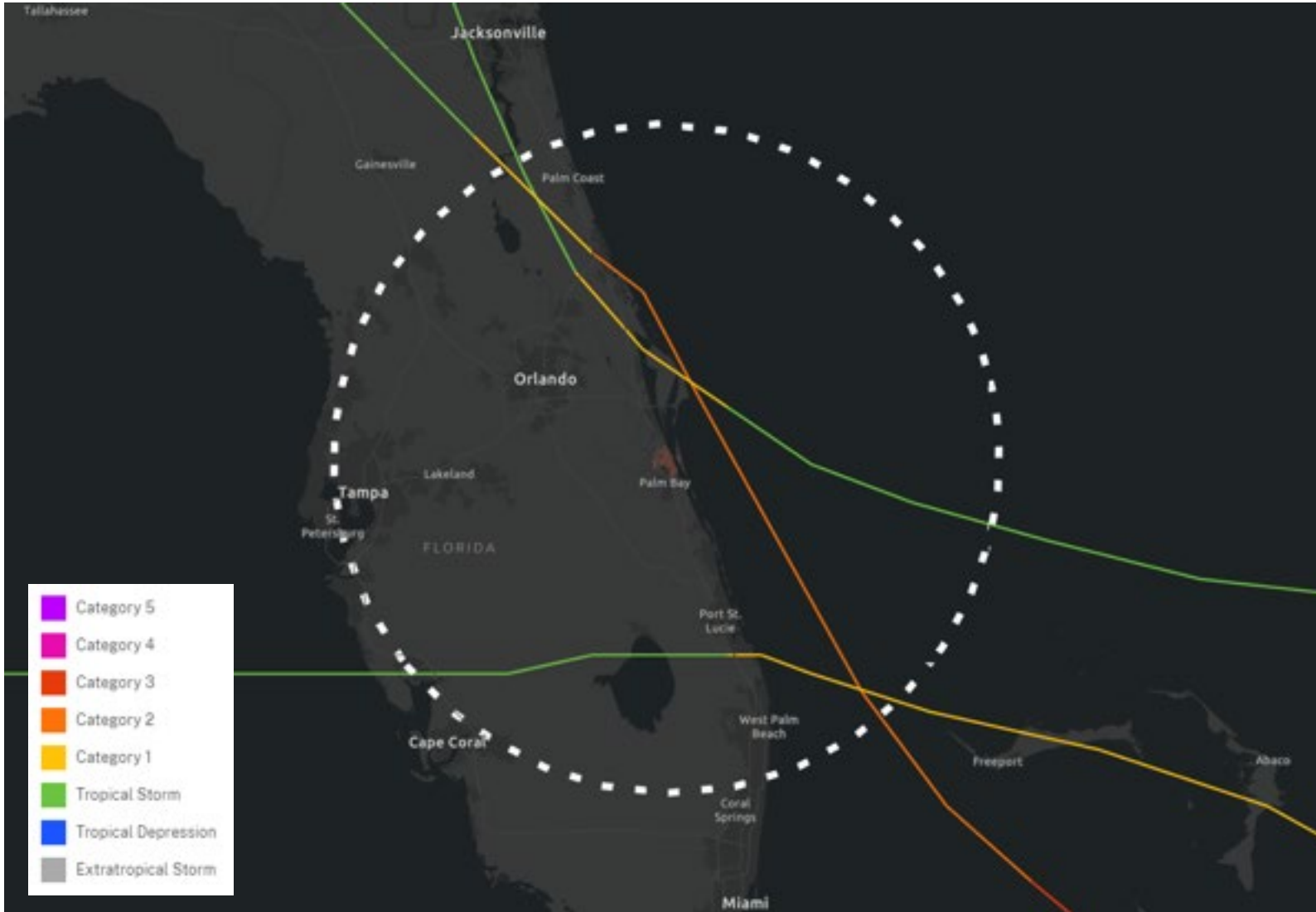


within **100 nm** of  
**Melbourne**

-----  
**2** Hurricanes  
**8** Tropical Storms

# Tropical Cyclones

## July Hurricanes (1851-2025)

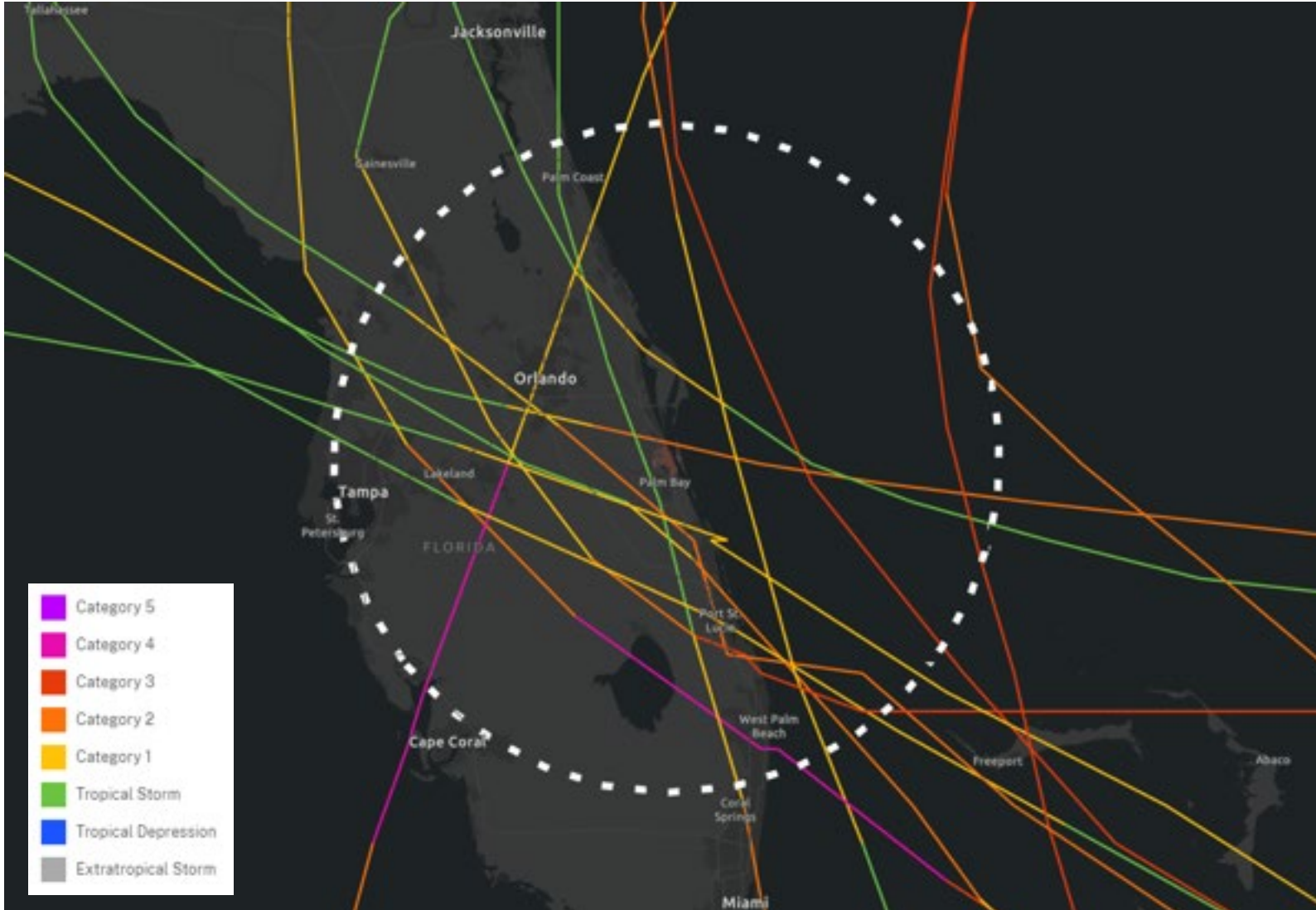


within **100 nm** of  
**Melbourne**

-----  
**3** Hurricanes  
**6** Tropical Storms

# Tropical Cyclones

## August Hurricanes (1851-2025)



within **100 nm** of  
**Melbourne**  
-----  
**14** Hurricanes  
**17** Tropical Storms

# Tropical Cyclones

## September Hurricanes (1851-2025)



within **100 nm** of  
**Melbourne**

**19** Hurricanes

**21** Tropical Storms

# Tropical Cyclones

## October Hurricanes (1851-2025)

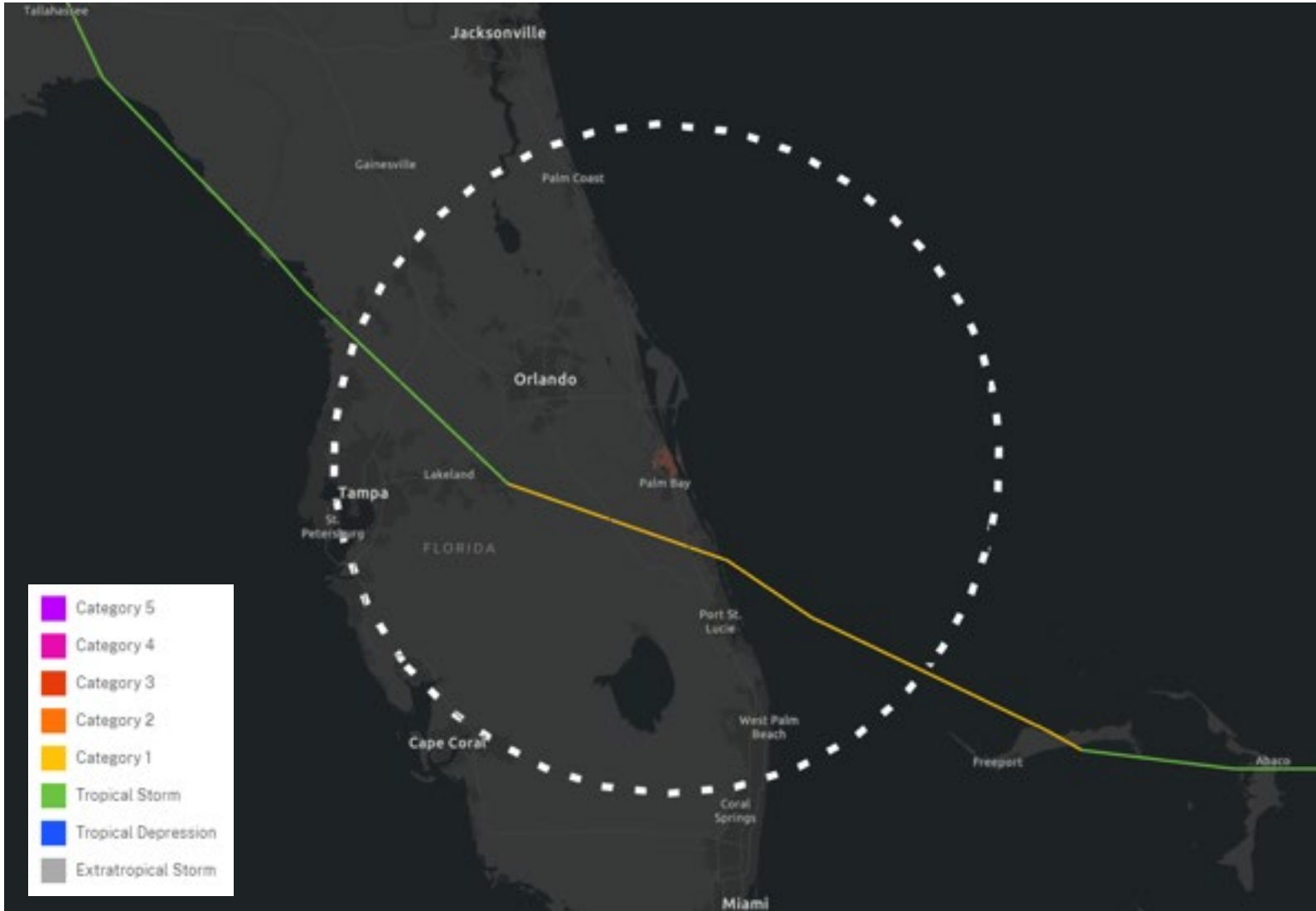


within **100 nm** of  
**Melbourne**

-----  
**23** Hurricanes  
**21** Tropical Storms

# Tropical Cyclones

## November Hurricanes (1851-2025)



within **100 nm** of  
**Melbourne**

-----  
**1** Hurricane  
**5** Tropical Storms

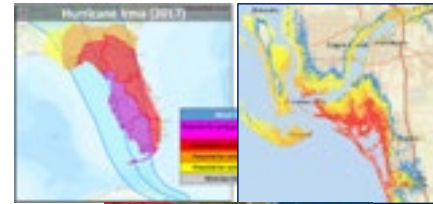


- **National Weather Service Overview**
- **Tropical Storms & Hurricanes Basics**
- **NWS Products & Services**
- **A Recap of 2025**
- **Looking Ahead To 2026**

## Timeline



- Tropical Weather Outlook



- Tropical Watches & Warnings
- Potential & Expected Storm Surge
- Hurricane Threats & Impacts

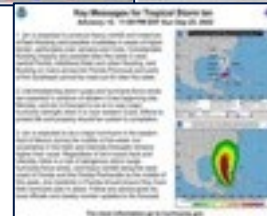
Days 6-7

Days 3-5

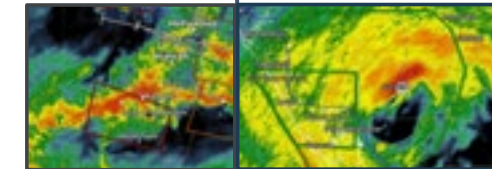
Days 1-2

Impact Day

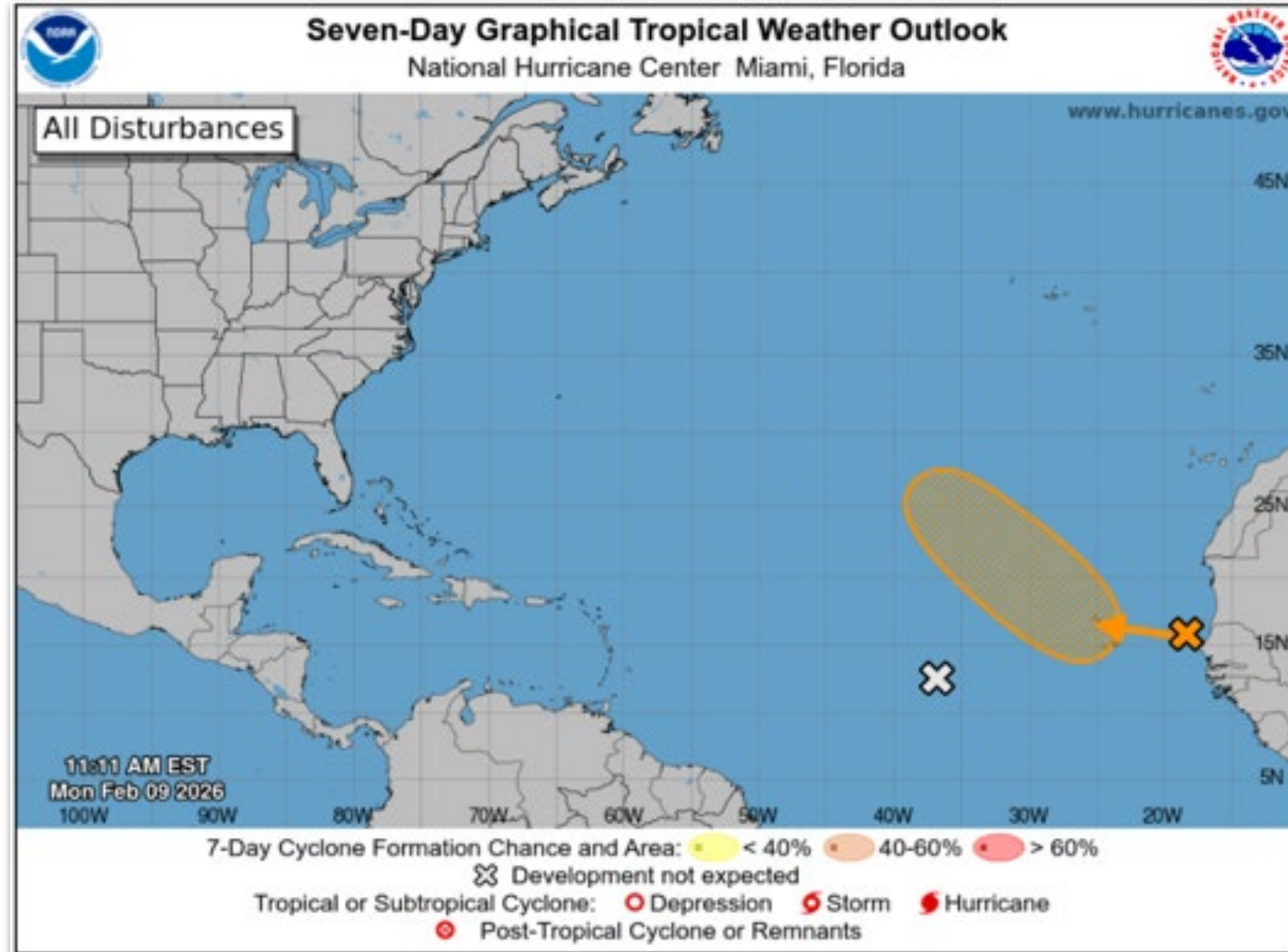
- Potential Track Forecast
- Wind Speed Probabilities
- Time of Arrival Graphics
- NHC Key Messages



- Tornado Warnings
- Extreme Wind Warnings
- Flash Flood Warnings



## Tropical Weather Outlook



- Highlights area of potential tropical development over the next 7 days
- Shading represents the potential formation area and *NOT* the track of the system
- Regularly issued beginning May 15th
- Beginning this year, disturbances with near 0% probability for development will be marked with a gray X

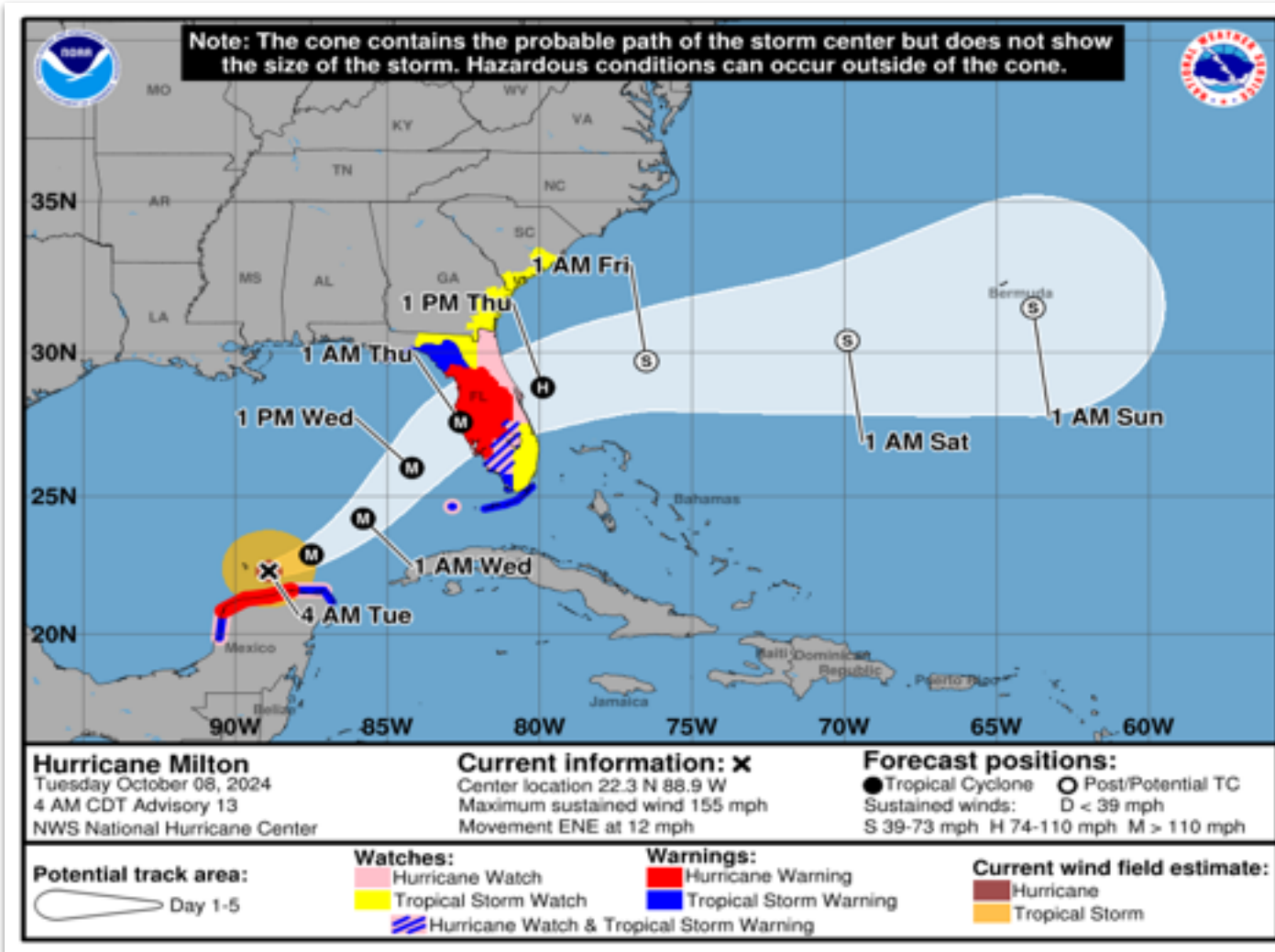
# Products & Services



WEATHER FORECAST OFFICE

Melbourne Florida

## Different Look To Forecast Cone Now Operational



- Inland watches & warnings now overlaid on top of the cone graphic
- Less emphasis on the cone, allowing users to determine wind risk
- Still depicts the most likely track (2/3rd of the time) of the center of the storm
- Does NOT convey impacts



Information about the NHC cone and reminders

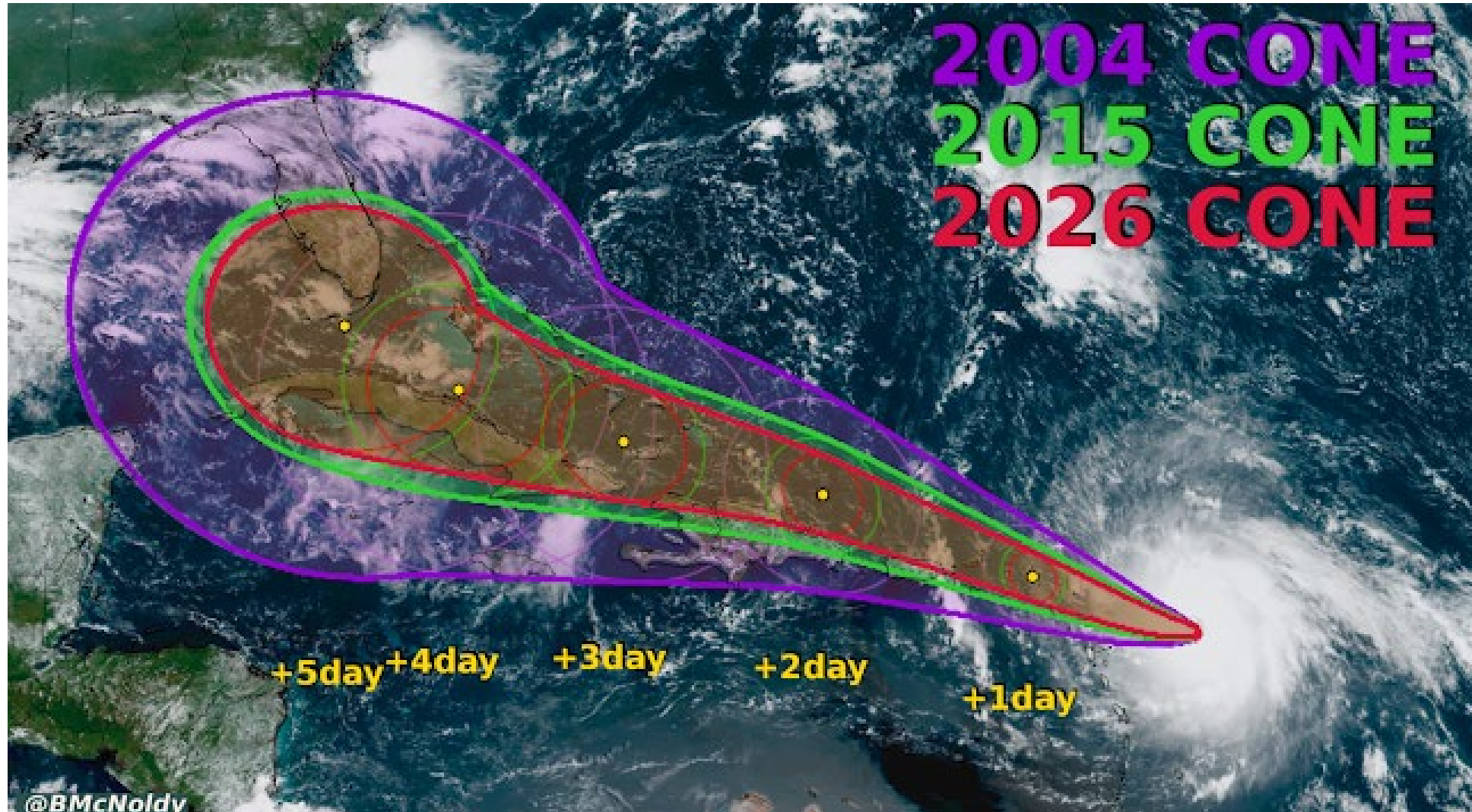
# Products & Services



WEATHER FORECAST OFFICE

Melbourne Florida

## Forecast Cone Size Comparison



# Threat Assessment



WEATHER FORECAST OFFICE

Melbourne Florida

## Wind Speed Probabilities - The Basics



### What is it?

The chance of tropical cyclone force winds at a specific location over the next 5 days. Available for three different wind speeds.

### How do you use it?

Watch the trends – increasing probabilities mean your location is at greater wind damage risk.

### How can it help you?

Helps monitor & evaluate your tropical cyclone wind risk & motivate preparedness.

# Threat Assessment



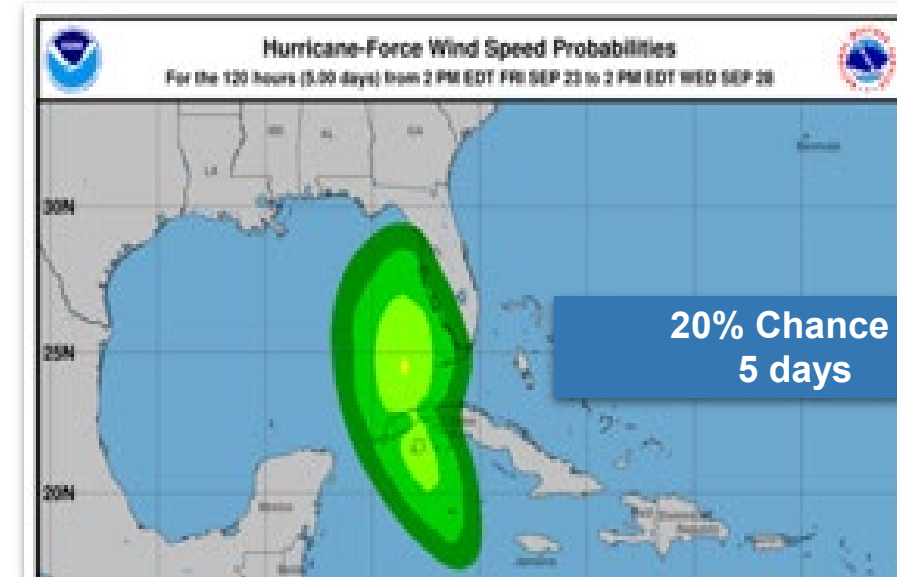
## Interpreting Wind Risk

Event	Probability of Event	Potential Impact
Rain	20%	Wet
Traffic Delay	20%	Late to Event
Hit by Truck	20%	Injury/Death
Hurricane	20%	Devastation

Low probabilities for a HIGH Impact Event are MEANINGFUL



Risk vs Reward



# Threat Assessment



## Wind Risk Timing



- Only 1 in 10 chance of tropical storm force winds arriving earlier than noted time
- Best for users with low risk tolerance (i.e. those that need more time to prepare)

*“Tropical storm force winds could arrive as early as Tuesday...”*



- Equal chances of tropical storm force winds arriving before or after the time listed
- Preparations should be completed by this time at the latest

*“Tropical storm force winds will likely arrive Tuesday night...”*

Available through the National Hurricane Center  
[hurricanes.gov](http://hurricanes.gov)

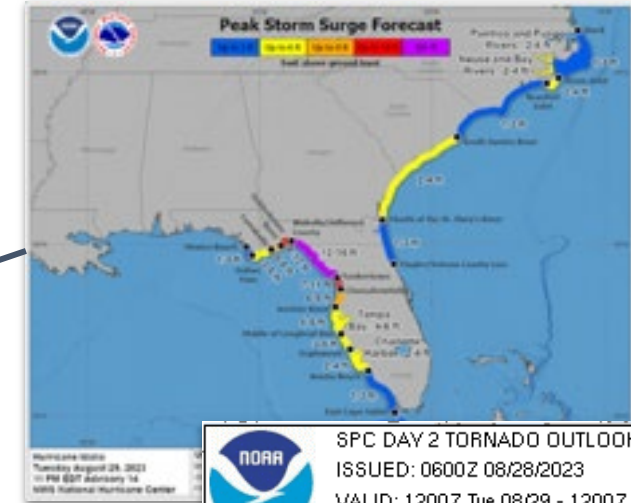
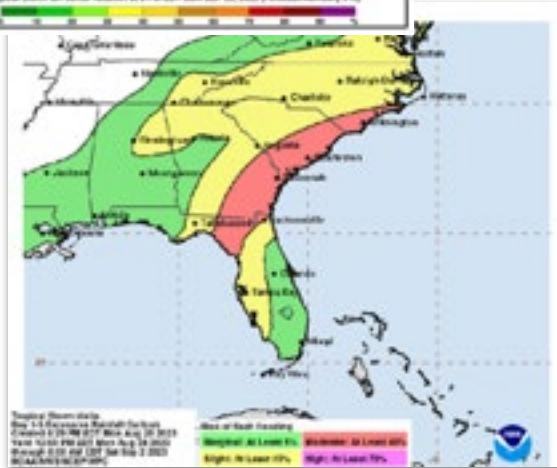
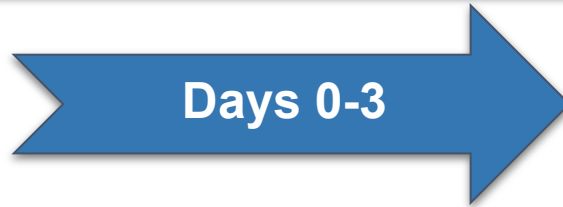
# Products & Services



WEATHER FORECAST OFFICE

Melbourne Florida

## Evaluate Individual Risk Using HTI



NOAA SPC DAY 2 TORNADO OUTLOOK  
ISSUED: 0600Z 08/28/2023  
VALID: 1200Z Tue 08/29 - 1200Z Wed 08/30  
FORECASTER: GLEASON  
NOAA/NWS Storm Prediction Center, Norman, Oklahoma



Tornado Probability Legend (in %):  
2 5 10 15 30 45 60 Sig

- Wind is just part of the overall threat of a tropical cyclone!
- Be sure to use other products to evaluate individual risk (Hurricane Threats & Impacts Graphics).



- **National Weather Service Overview**
- **Tropical Storms & Hurricanes Basics**
- **NWS Products & Services**
- A Recap of 2025
- **Looking Ahead To 2026**

# 2025 Atlantic Season



WEATHER FORECAST OFFICE

Melbourne Florida

Ended With Major Hurricane Melissa



## 2025 Atlantic Tropical Cyclone Names

Andrea	5 Humberto	Olga
Barry	1 Imelda	Pablo
Chantal	Jerry	Rebekah
Dexter	Karen	Sebastien
5 Erin	Lorenzo	Tanya
Fernand	5 Melissa	Van
4 Gabrielle	Nestor	Wendy

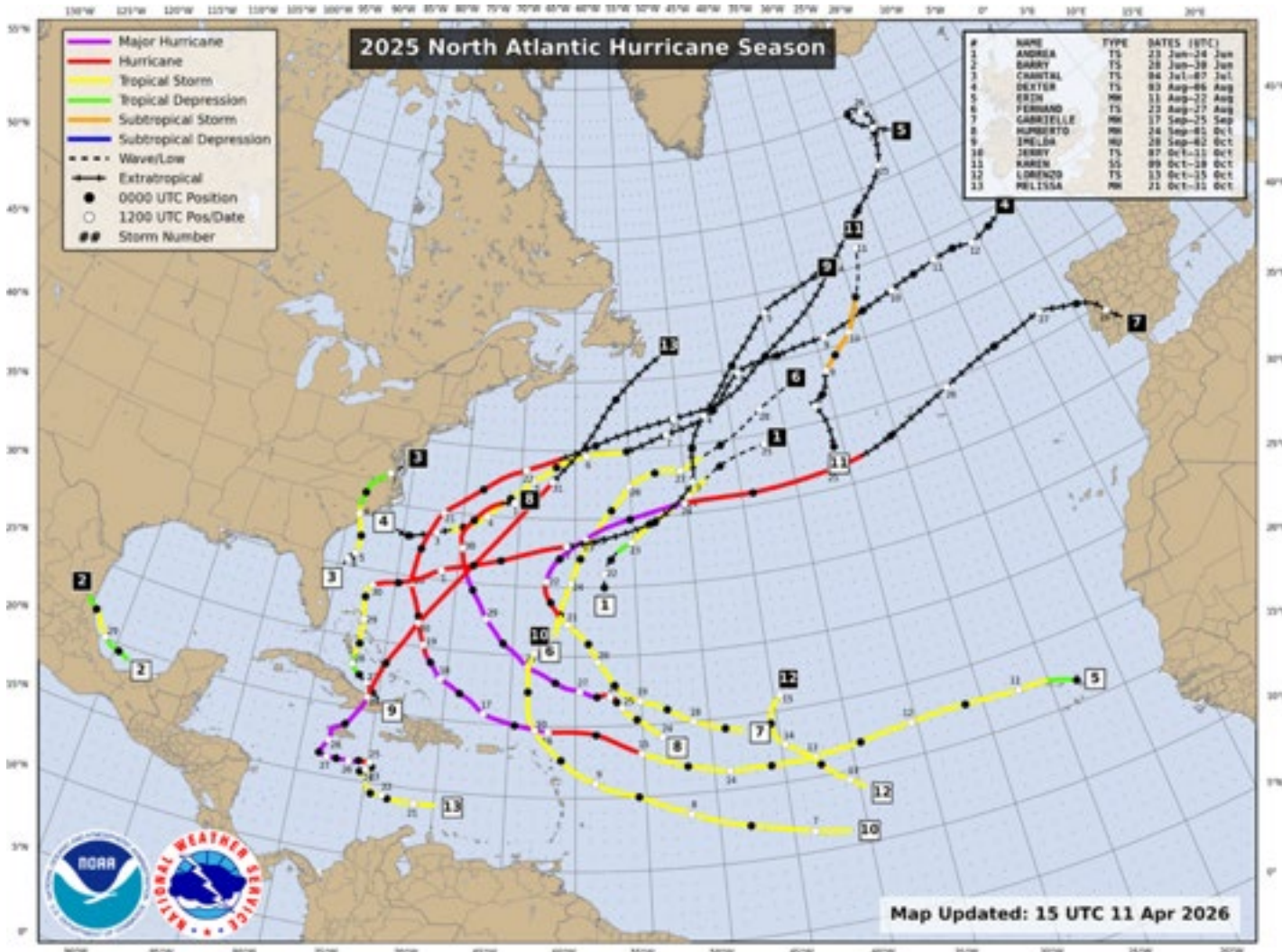
Be prepared: Visit [hurricanes.gov](https://hurricanes.gov) and follow NOAA's @NWS and @NHC\_Atlantic on X.

May 2025

# 2025 Atlantic Season Summary



## By the numbers



## Number of Storms

- 13 named storms (14)
- 5 hurricanes (7)
- 4 major hurricanes (3)

## Impacts

- 3 hurricane landfalls
  - Cuba: 1
  - Jamaica: 1
  - Bahamas: 1
  - U.S.: 0

*(Mexico: 1 - Erick in E. Pacific)*

- 125 total fatalities

# Atlantic Rapid Intensification



WEATHER FORECAST OFFICE  
Melbourne Florida

A Busy Season

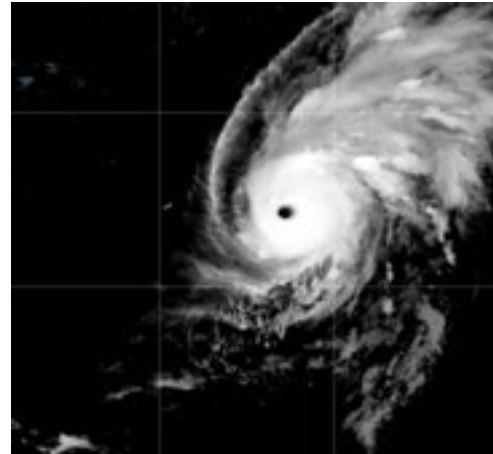
Category 5



**Erin**  
75 kt in 24 h

13 fatalities due to  
flooding and high surf

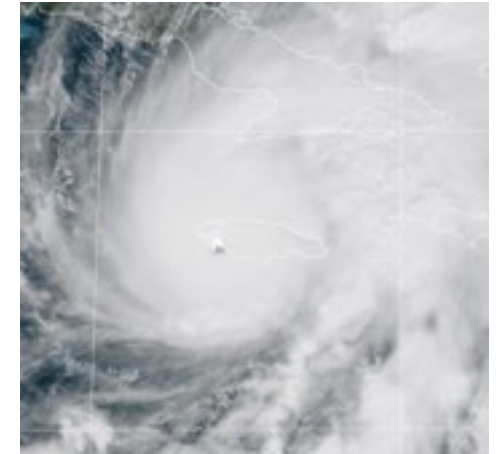
Category 5



**Gabrielle**  
50 kt in 24 h

**Humberto**  
55 kt in 24 h

Category 5



**Melissa**  
55 kt in 24 h  
105 kt in 72 h

93 fatalities across  
the Caribbean

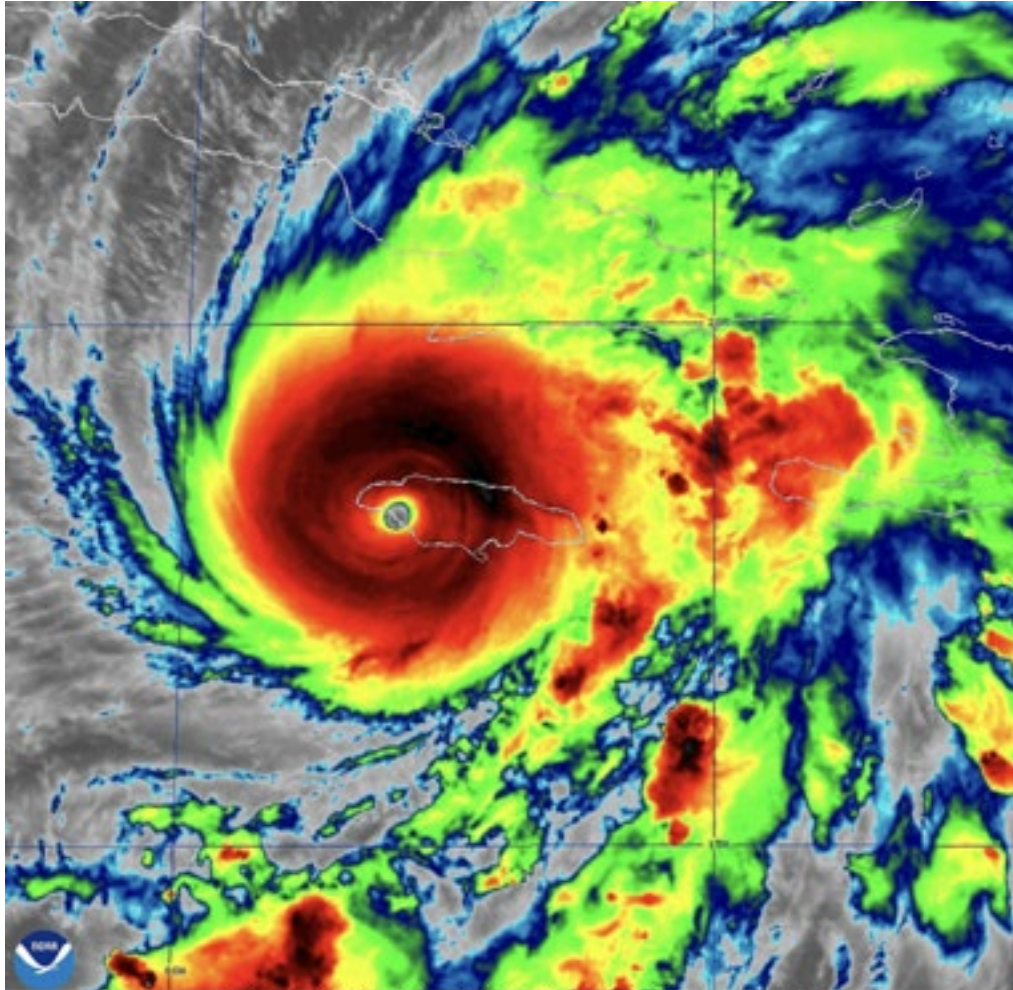
# Hurricane Melissa

A Record Breaker



WEATHER FORECAST OFFICE

Melbourne Florida



28 Oct 2025 17:21Z - NOAA/NESDIS/STAR GOES-19 - Band 13

## Hurricane Melissa Impacts\*

<b>Jamaica</b>	45 fatalities \$8.8 billion (USD) in damage
<b>Haiti</b>	43 fatalities
<b>Dominican Republic</b>	4 fatalities
<b>Cuba</b>	1 fatality

*\*As of 25 February NHC Report*

## Atlantic Tropical Cyclone History

- Tied for strongest maximum sustained winds (165 kt)
- Tied for strongest landfall (160 kt)
- Tied for 3<sup>rd</sup> lowest minimum central pressure (892 mb)
- 2<sup>nd</sup> lowest landfall pressure (897 mb)



- **National Weather Service Overview**
- **Tropical Storms & Hurricanes Basics**
- **NWS Products & Services**
- **A Recap of 2025**
- **Looking Ahead To 2026**



# 2026 Atlantic Tropical Cyclone Names

Arthur  
Bertha  
Cristobal  
Dolly  
Edouard  
Fay  
Gonzalo

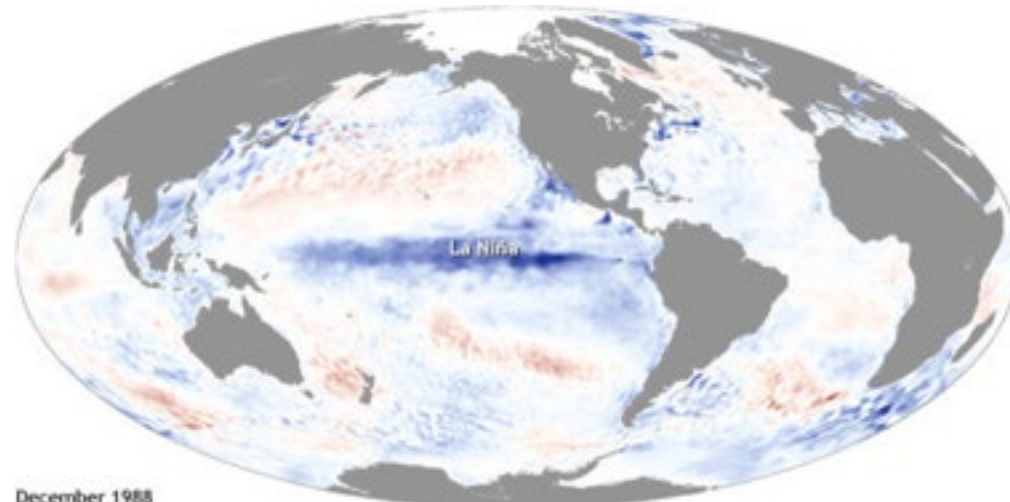
Hanna  
Isaias  
Josephine  
Kyle  
Leah  
Marco  
Nana

Omar  
Paulette  
Rene  
Sally  
Teddy  
Vicky  
Wilfred

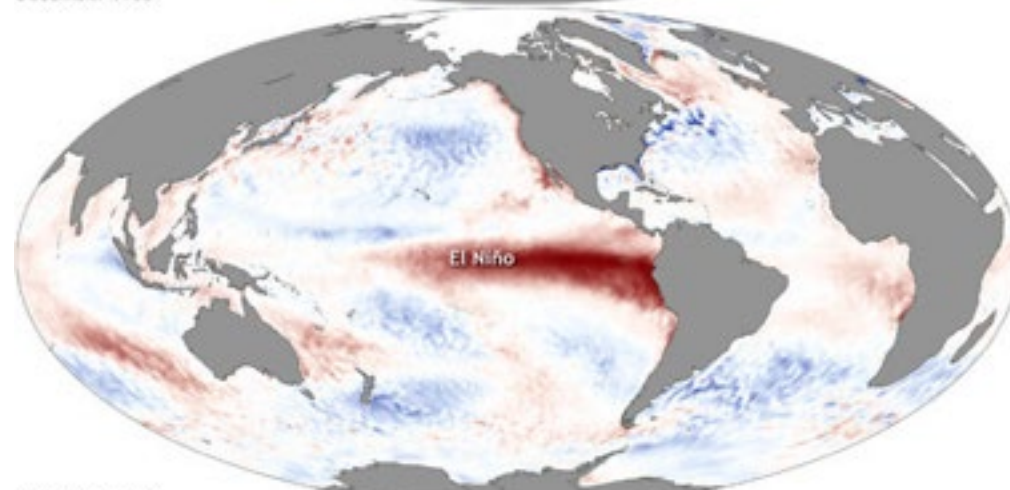
# El Niño-Southern Oscillation (ENSO)



## What Is It?



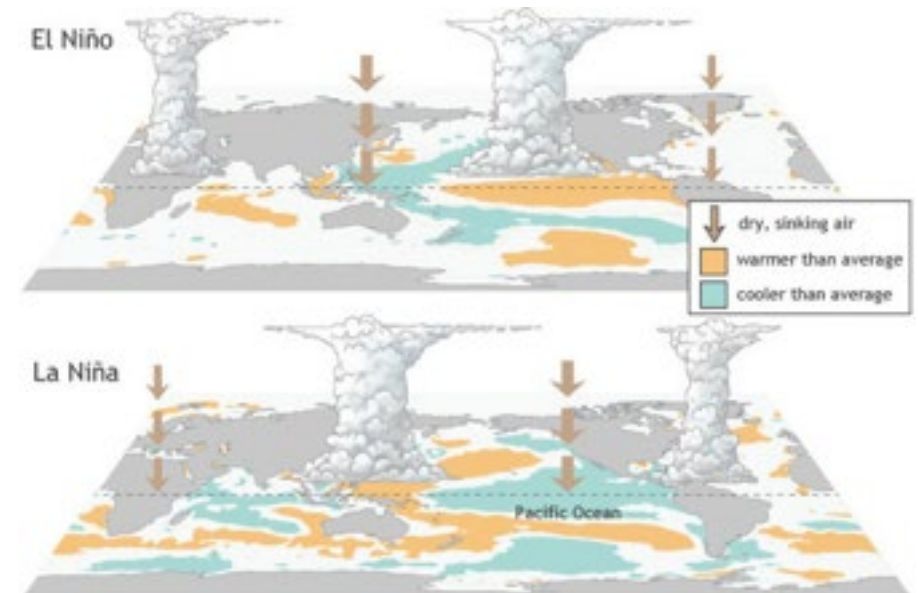
December 1988



December 1997



- The change in seas surface temperatures (SSTs) in the central & eastern tropical Pacific, which have effects on global patterns
- There are 3 different phases:
  - El Niño- Warmer than average SSTs
  - Neutral- Near average SSTs
  - La Niña- Cooler than average SSTs



# El Niño-Southern Oscillation (ENSO)

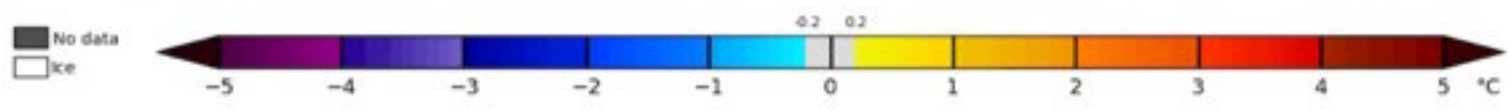
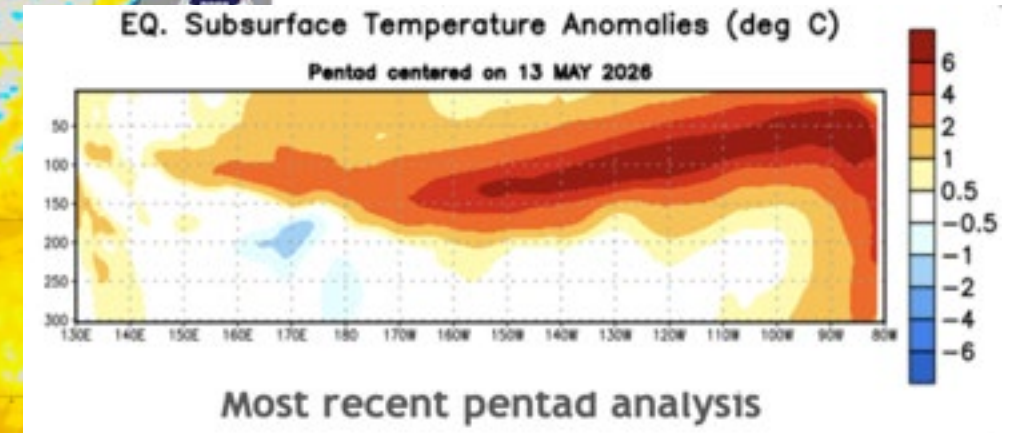
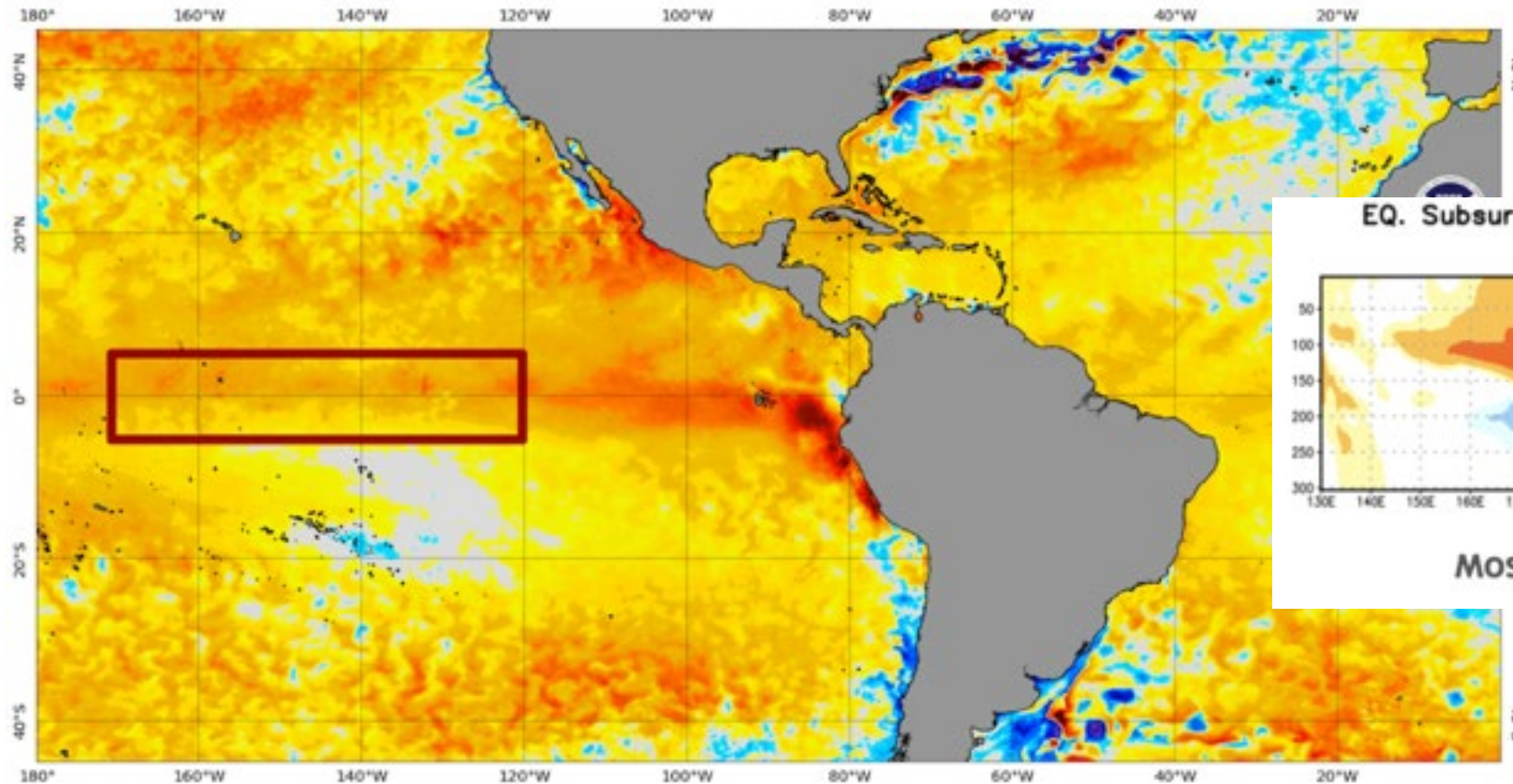


WEATHER FORECAST OFFICE

Melbourne Florida

Currently Transitioning to El-Niño

NOAA Coral Reef Watch Daily 5km SST Anomalies (v3.1) 18 May 2026



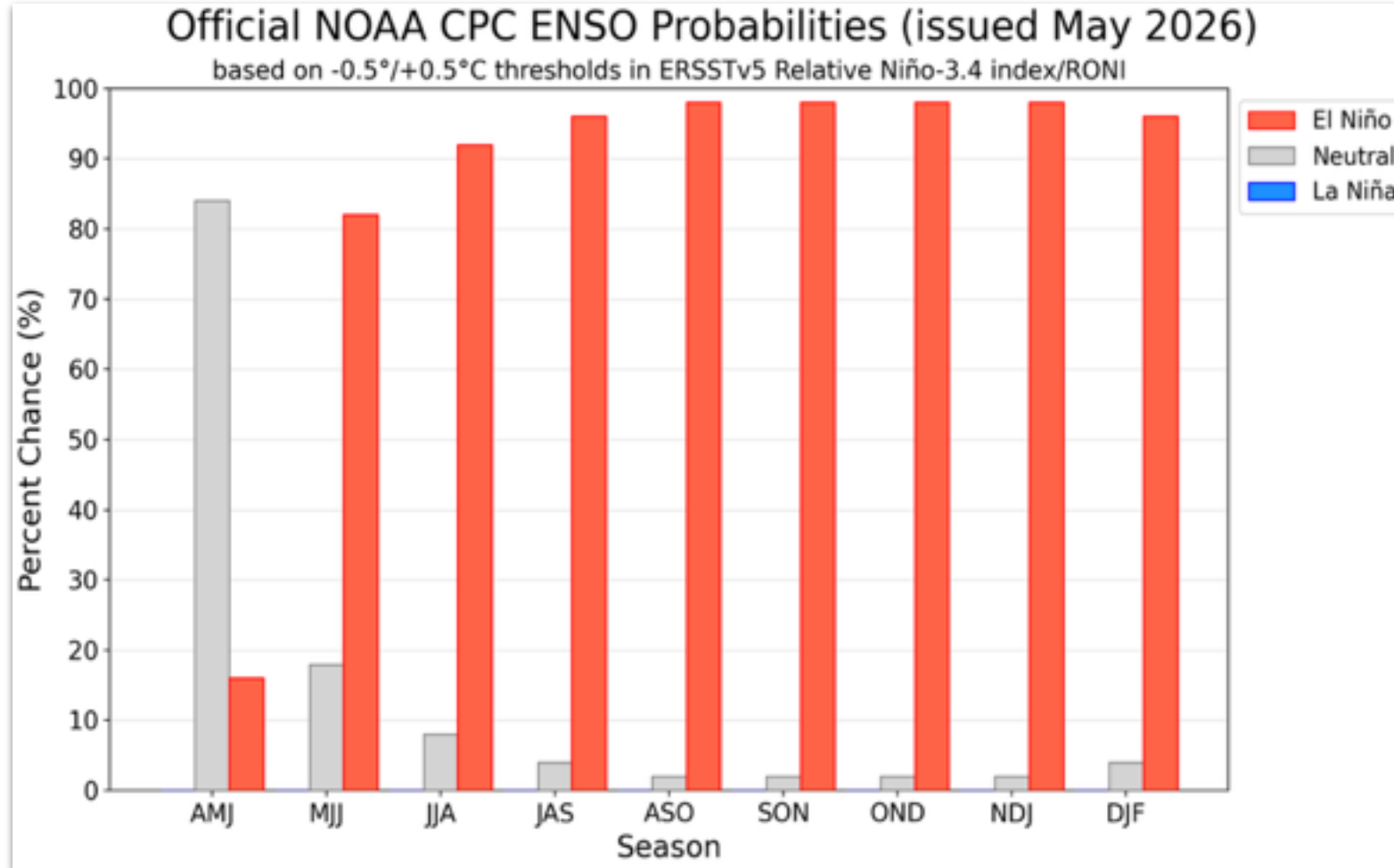
# El Niño Watch In Effect

Predicted To Last At Least Into Early 2027



WEATHER FORECAST OFFICE

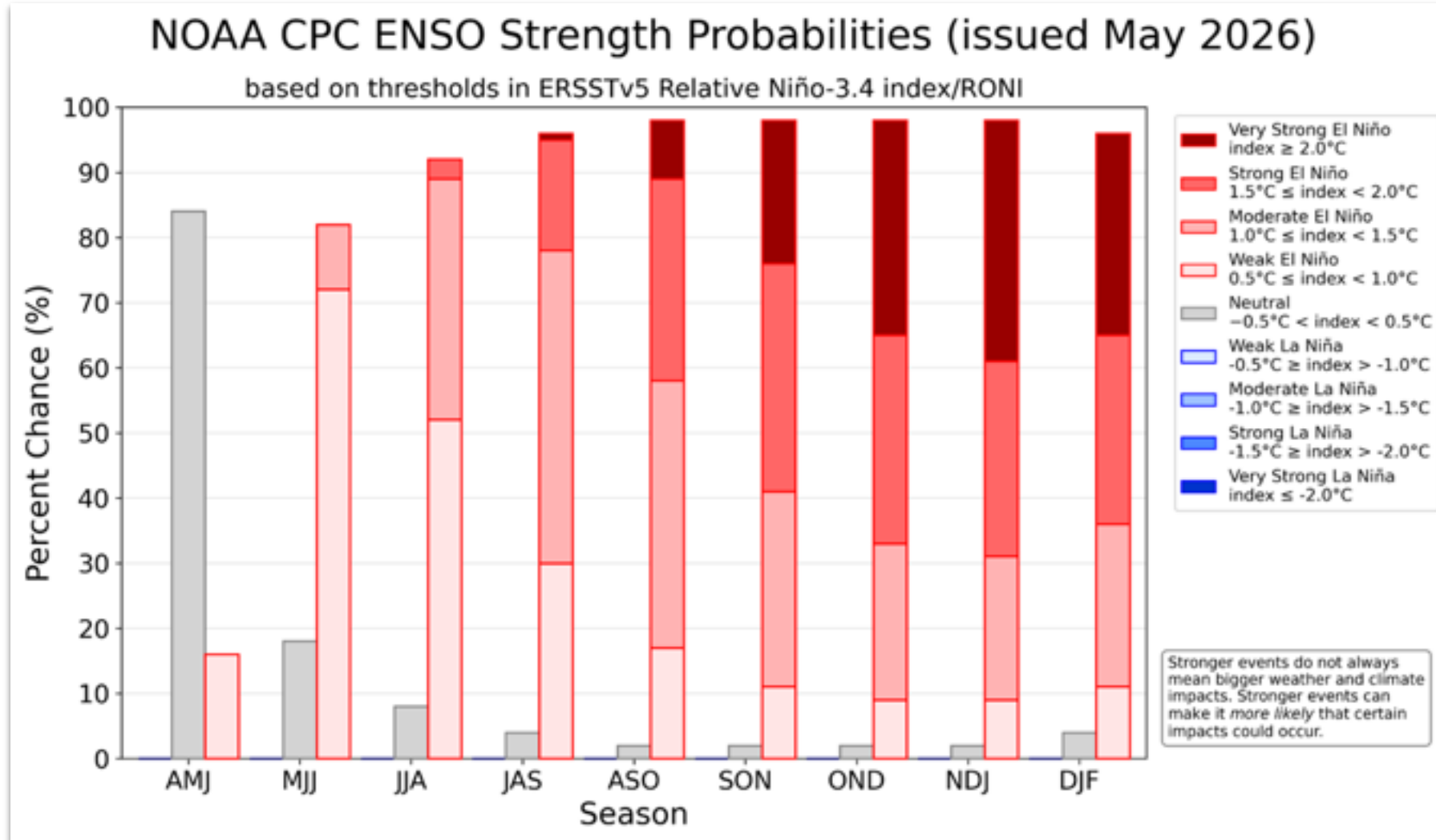
Melbourne Florida



# El Niño Watch In Effect



Increasing Chances For Stronger El Niño Through 2026



# Hurricane Season 2026



WEATHER FORECAST OFFICE

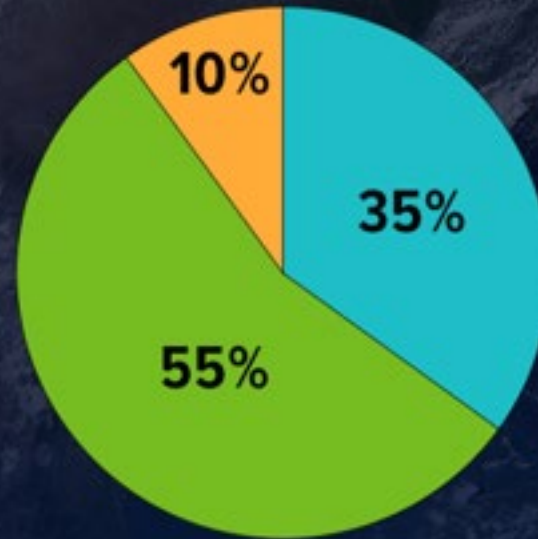
Melbourne Florida

The Forecast



## 2026 Atlantic Hurricane Season Outlook

### Season Probability



Above Normal



Near Normal



Below Normal

### Named Storms

8 - 14

### Hurricanes

3 - 6

### Major Hurricanes

1 - 3

Be prepared: visit [hurricanes.gov](https://hurricanes.gov) and follow NOAA's @NWS and @NHC\_Atlantic on X.

May 2026

# Hurricane Season 2026



WEATHER FORECAST OFFICE

Melbourne Florida

## The Forecast

	Climatology	Forecast	
	Average	Colorado State	NOAA/NWS
<b>Named Storms</b>	14	13	8-14
<b>Hurricanes</b>	7	6	3-6
<b>Major Hurricanes</b>	3	2	1-3

- Near- to below-average season is **favored**, with El Niño likely to develop through the end of the year
- Historically, El Niño events increase wind shear across the Atlantic basin, making it harder for tropical cyclones to develop
- While El Niño events generally suppress hurricane activity, it only takes *one* storm to make a big impact

# Tropical Cyclone Tracks



WEATHER FORECAST OFFICE

Melbourne Florida

By ENSO Phase (1950-2025)



## El Niño (22 Seasons)

within 100 nm of  
Brevard County

---

**9** Hurricanes

**6** Tropical Storms



## Neutral (33 Seasons)

within 100 nm of  
Brevard County

---

**24** Hurricanes

**12** Tropical Storms



## La Niña (21 Seasons)

within 100 nm of  
Brevard County

---

**13** Hurricanes

**9** Tropical Storms

# Notable Tropical Cyclones



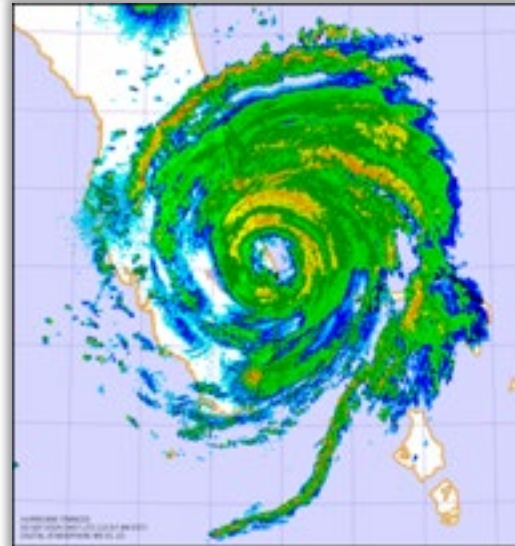
WEATHER FORECAST OFFICE

Melbourne Florida

During El Niño Years



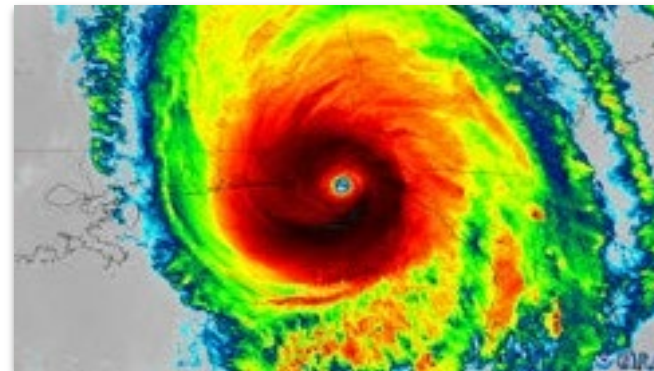
Charley (2004)



Frances (2004)



Jeanne (2004)



Michael (2018)

- Major hurricanes have & can happen, even during an El Niño season
- Rapid intensification (RI) remains possible
- Rapid intensification near the coast could limit the time available to prepare!



- National Weather Service Overview
- Tropical Storms & Hurricanes Basics
- NWS Products & Services
- A Recap of 2025
- Looking Ahead To 2026
- **Bonus: Social Media Beware!**

# What's Your Favorite Model?



Each Have Strengths & Weaknesses

## Global



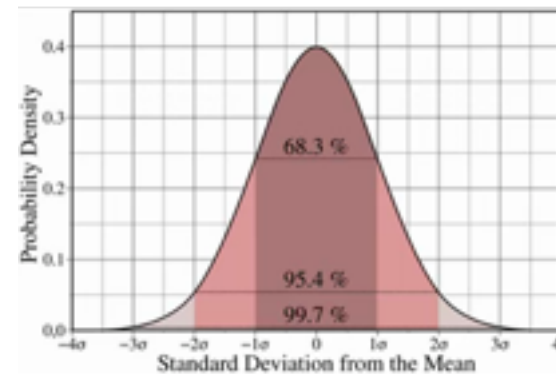
**GFS, ECMWF**  
Good for track,  
environment  
Not for intensity

## Regional



**HAFS, HWRP**  
Good for intensity  
Not as good for track

## Statistical



**SHIPS, LGEM**  
Good for environment/  
intensity  
Not used for track

## AI

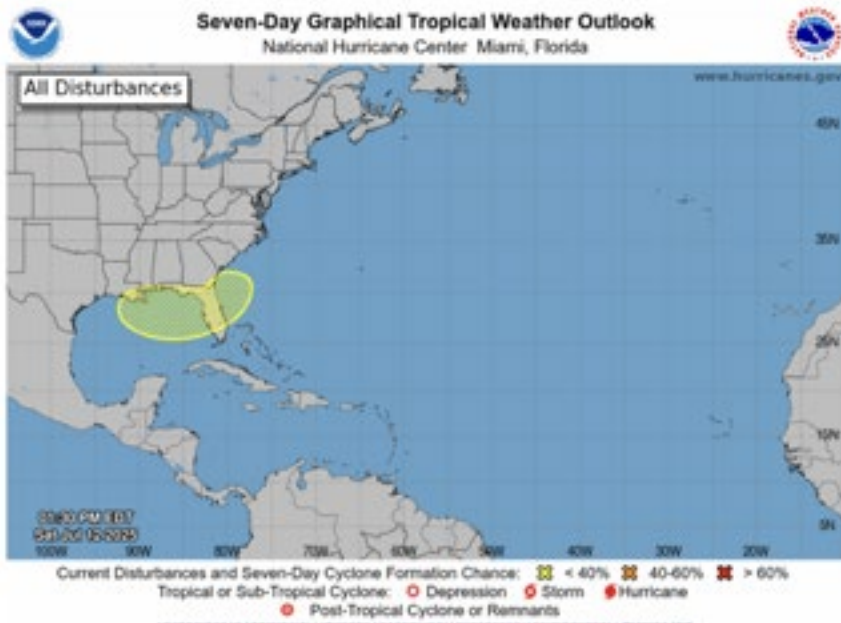


**GDM, ECAI**  
Good for track and  
intensity.  
Not good for analyzing  
environment

# Beware of Social Media Traps



## Avoid The Hype Train



WEATHER

### Houston TikTok sparks panic over a storm that doesn't exist

"I sometimes predict the storms better than the weathermen do."

TROPICS: Dexter could be a thing this system I think may need to be watched

Will Dexter be a hurricane?  
Next Storm Would Be Dexter

Hurricane Dexter?

Hurricane Update Coming To Texas...

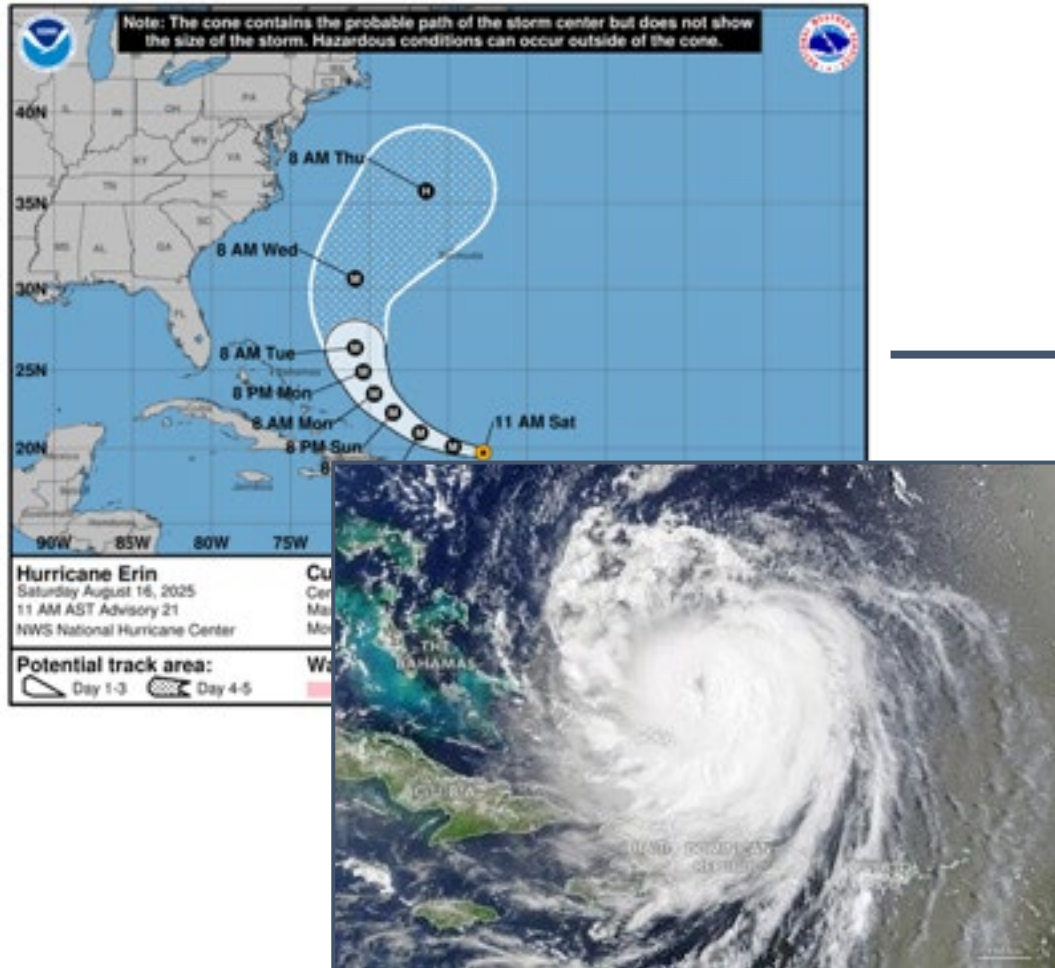
# Beware of Social Media Traps



WEATHER FORECAST OFFICE

Melbourne Florida

Avoid the Hype Train



# Florida Tropical Training Week

Presented By Meteorologists From The National Weather Service  
July 27th-30th: 11AM, 1PM, 7PM EDT each day

Register Today! (Free & Virtual)

FL Tropical Training 2026



DAY 1 - July 27th  
Getting Ready



DAY 2 - July 28th  
Hunker Down



DAY 3 - July 29th  
Post Storm Safety



DAY 4 - July 30th  
Lessons Learned



[WWW.WEATHER.GOV](http://www.weather.gov)

BE PREPARED.  
STAY AWARE.

[WWW.HURRICANES.GOV](http://www.hurricanes.gov)



# Questions?



**Will Ulrich**

*Warning Coordination Meteorologist*

National Weather Service

Weather Forecast Office

Melbourne, FL

# Sector Jacksonville Heavy Weather Plan

LCDR Nanney - EMFR

# Heavy Weather Plan Scope

- Guides CG Units & Port Stakeholders
- Area of Responsibility:
- Crooked Creek, GA to Malabar, FL
- Port of Fernandina, Port of Jacksonville, and Port Canaveral
- Unit Hurricane Conditions and Port Conditions
- Coast Guard Unit and Personnel Preparedness
- Port Preparedness
- Pre Storm and Post Storm Actions & Operations



Homeland  
Security



# Port Coordination Teams

- 2 Teams (Northeast and East Central Florida)
- Multi-Agency and Stakeholder Team
- Activates at Request of COTP or Team Mbrs
- Marine Transportation System Status Reporting
- Advise and Recommend Courses of Action
- Prioritization of Vessels and Recovery Actions
- Identification of Critical Cargoes or Operations



Homeland  
Security



# Port Preparedness

- Chapter 4 - Pre-Storm Procedures
  - Outlines action to be taken by maritime interests
  - Actions are broken down by Port Condition, who, what and when
- Port Canaveral is not suitable for refuge, vessels or barges greater than 500 GT ITC will not be permitted to remain in Port
- Port Authorities/private terminal operators – direct vessels to depart during YANKEE



# Port Conditions

**Table 1.5**

Port Condition	When Set	Port Status
<b>Condition 5</b>	General. 01 Dec – 31 May.	Port status: OPEN
<b>Condition 4</b>	Hurricane Seasonal Alert. 01 June – 30 Nov (return to this condition after passage of storm during season).	Port status: OPEN
<b>Condition Whiskey</b>	Sustained Tropical Storm Force Winds are <b>predicted</b> within 72 hours.	Port status: OPEN
<b>Condition X-Ray</b>	Sustained Tropical Storm Force Winds are <b>predicted</b> within 48 hours.	Port status: OPEN
<b>Condition Yankee</b>	Sustained Tropical Storm Force Winds are <b>predicted</b> within 24 hours.	Port status: RESTRICTED, vessel/facility control measures in effect.
<b>Condition Zulu</b>	Sustained Tropical Storm Force Winds are <b>predicted</b> within 12 hours.	Port status: CLOSED to all vessel traffic and waterside operations except for activities approved by COTP Jacksonville.

**NOTE: Storm movements impacting the time between Port Conditions may be less than listed.**



# Sector Jacksonville Website



<https://www.atlanticarea.uscg.mil/Our-Organization/Southeast-District/Units/Sector-Jacksonville/>



Homeland  
Security



# Plan Online Location

The screenshot displays the website for the United States Coast Guard Atlantic Area, specifically the Sector Jacksonville page. The header includes the organization's name and a search bar. A navigation menu lists various sections, and a breadcrumb trail shows the current location: ATLANTIC AREA > OUR ORGANIZATION > SOUTHEAST DISTRICT > UNITS > SECTOR JACKSONVILLE > REGIONAL CONTINGENCY PLANS. The main content area features a vertical sidebar on the left with links to 'SECTOR JACKSONVILLE', 'MEET THE COMMAND', 'SECTOR UNITS', 'SECTOR DEPARTMENTS', 'SECTOR RESERVE FORCES', 'LATEST NEWS', 'CONTINGENCY RESPONSE', 'REGIONAL COMMITTEES', 'PORT INFORMATION', 'MARINER RESOURCES', 'HOMELAND SECURITY INFORMATION', 'EMERGENCY PREPAREDNESS & HURRICANE RESOURCES', 'OMBUDSMAN', 'LEARN MORE', and 'CONTACT WEBMASTER'. The central column lists several contingency plans: 'HEAVY WEATHER PLAN', 'AREA CONTINGENCY PLAN', 'SALVAGE RESPONSE PLAN', 'MASS RESCUE OPERATIONS PLAN', 'AREA MARITIME SECURITY PLAN', and 'MTS RECOVERY PLAN'. To the right of these plans are five blue buttons: 'Heavy Weather Plan', 'National Hurricane Center', 'Telework Capability (CAC Required)', 'Coast Guard Incident Management Handbook', 'ERMA Common Operating Picture', 'Request CommCom Resources (CAC Required)', and 'Homeland Security Information Network'. The bottom of the page features the U.S. Department of Homeland Security logo and the text 'Homeland Security'.



Homeland Security



# Remain in Port Requests

- Required for foreign and domestic commercial ocean-going vessels & barges over 500 GT ITC
- Requests must be submitted w/in 12 hours of Port Condition Whiskey
- Vessels entering port after Whiskey must submit prior to entering port
- Vessels planning inbound & outbound transit prior to Condition Zulu must still submit



# Annex H – Remain in Port Requests

## ANNEX H

### REMAIN IN PORT REQUEST VESSELS/TUGS & BARGES OVER 500 GT ITC

**Authority: Title 33 United States Code (U.S.C.) § 471, Title 46**

**U.S.C. § 70002 and Title 46 U.S.C. § 70051**

#### Instructions:

Please fill out all applicable sections. Any section not applicable, mark "N/A". Failure to fully complete the request may result in a delay in review or result in request being denied. Once completed, please forward request to Sector Jacksonville by email. Please call Sector Jacksonville's Domestic Vessel Branch at (904) 714-7629 to ensure request was received. Completion of this form will assist the Captain of the Port (COTP) in making the determination that the vessel can remain in port.

Email Address: [jaxdomestic@uscg.mil](mailto:jaxdomestic@uscg.mil)

1. Vessel Name: \_\_\_\_\_ Flag: \_\_\_\_\_  
Call Sign: \_\_\_\_\_ Official #: \_\_\_\_\_  
Barge Name(s): \_\_\_\_\_ Flag: \_\_\_\_\_  
Official #(s): \_\_\_\_\_
2. Nationality of the Vessel: \_\_\_\_\_
3. Name of Master: \_\_\_\_\_
4. Name of Agent: \_\_\_\_\_ Phone #: \_\_\_\_\_  
Address of Agent: \_\_\_\_\_
5. Name of Charter/Operator: \_\_\_\_\_ Phone#: \_\_\_\_\_  
Address of Charter/Operator: \_\_\_\_\_
6. Name of Owner: \_\_\_\_\_ Phone#: \_\_\_\_\_  
Address of Owner: \_\_\_\_\_
7. Vessel - Length: \_\_\_\_\_ Gross Tonnage \_\_\_\_\_  
Barge - Length: \_\_\_\_\_ Gross Tonnage \_\_\_\_\_
8. Reason why the vessel cannot leave port: \_\_\_\_\_  
\_\_\_\_\_  
\_\_\_\_\_
9. Condition of Vessel or barges (loaded-type of cargo/ballast/etc.):  
\_\_\_\_\_  
\_\_\_\_\_  
\_\_\_\_\_
10. Number of personnel to remain on the vessel and their qualifications: \_\_\_\_\_  
\_\_\_\_\_  
\_\_\_\_\_
11. Amount of ballast the vessel may hold: \_\_\_\_\_
12. Amount of bunkers, lube oil, and diesel oil onboard: \_\_\_\_\_



# Lay Up Vessels

- No vessel will be permitted to enter or remain in lay-up status during the hurricane season.
- Vessels unable to depart before June 1st must obtain written permission from the COTP to remain in port.
- These requests shall include a lay-up plan containing specific provisions for all categories of hurricanes.
- Utilize Lay Up Officers for questions:
  - LTJG Anderson and Chief Chavers



# Heavy Weather Shelter Plans

- All U.S. flag vessels 500 GT ITC with base operations that routinely originate from or within the COTP Jacksonville zone shall submit a Heavy Weather Shelter Plan by May 30th.



Homeland  
Security



# Evacuation Considerations: Canaveral Locks

- 12 hrs prior to 30 mph sustained winds locks stop operating
- 401 lift bridges will stop operating at gale force winds



Homeland  
Security



# Port Information

The screenshot displays the website for the United States Coast Guard Atlantic Area, specifically the Port Information page for Sector Jacksonville. The page features a dark blue header with the organization's name and a search bar. Below the header is a navigation menu with options like 'ABOUT US', 'OUR ORGANIZATION', and 'ATLANTIC AREA'. The main content area is titled 'SECTOR JACKSONVILLE' and includes a circular logo with the motto 'GUARDIANS OF THE FIRST AND SPACE COASTS'. A vertical sidebar on the left contains a list of navigation links such as 'SECTOR JACKSONVILLE', 'MEET THE COMMAND', and 'PORT INFORMATION'. The main content area contains five blue buttons: 'Port Status Information via NAVCEN', 'Marine Safety Information Bulletins (MSIBs)', 'Broadcast Notice to Mariners', 'Local Notice to Mariners', and 'Weather Information'. On the right side, there is a National Weather Service radar map of the Jacksonville area, showing a temperature scale at the bottom. The footer includes logos for the National Hurricane Center and Central Pacific Hurricane Center, along with navigation links for 'Home', 'Mobile Site', 'Text Version', and 'RSS'.



Homeland Security



# NAVCEN Link

An official website of the United States government



## Navigation Center

United States Coast Guard  
U.S. Department of Homeland Security



[Home](#) [Print](#)

- Home
- Search
- Resources ▾
- Maritime Safety Information ▾
- Nav Systems and Services ▾
- Waterways ▾
- Contact Us/Report a Problem ▾
- SARSAT - Home ▾

### Port Status

#### Captain of the Port Details



Primary Phone: (904) 714-7500  
Emergency Phone: (904) 714-7558  
Fax Number: N/A  
Rescue 21 VHF DSC MMSI Number: 003669962  
Response Phone: 904-714-7539  
Incident Mgmt. Phone: 904-714-7521  
Enforcement Phone: 904-714-7522  
Prevention Phone: 904-714-7549  
Inspection Phone: 904-714-7617  
Investigations Phone: 904-714-7496  
Waterways Management Phone: 904-714-7616  
Emergency Management Phone: 904-714-7546  
Facilities Branch Phone: 904-714-7616  
Commercial Fishing Vessel Phone: 904-714-7601  
Foreign Vessel Exams Phone: 904-714-7612  
Facility Inspection Branch Phone: 904-718-7339  
Vessel Traffic Service Phone: N/A

SECTOR JACKSONVILLE (07-33231)  
10426 ALTA DRIVE  
JACKSONVILLE FL

[Sector Jacksonville Marine Safety Information Bulletins \(MSIBs\)](#)

Port	Status	Comments	Last Changed
PORT OF FERNANDINA	Open	Port Condition Five - MSIB 065-25	2025-12-24
PORT OF JACKSONVILLE	Open	Port Condition Five - MSIB 065-25	2025-12-24
PORT CANAVERAL	Open	Port Condition Five - MSIB 065-25	2025-12-24


(Port Conditions Description/Reference)



Homeland Security



# MSIB Page




**UNITED STATES COAST GUARD ATLANTIC AREA**  
U.S. DEPARTMENT OF HOMELAND SECURITY

Search Atlantic Area

f i x


ABOUT US ▾ OUR ORGANIZATION ▾ FEATURED CONTENT ▾ ATLANTIC AREA ▾ CONTACT JOIN ▾

**DUE TO A LAPSE IN FEDERAL FUNDING, THIS WEBSITE WILL NOT BE ACTIVELY MANAGED.**



For more information, please visit our [CURRENT STATUS](#) page.

ATLANTIC AREA > OUR ORGANIZATION > SOUTHEAST DISTRICT > UNITS > SECTOR JACKSONVILLE > SECTOR JACKSONVILLE MSIBS



**SECTOR JACKSONVILLE**  
\* GUARDIANS OF THE FIRST COAST \*

- SECTOR JACKSONVILLE
- MEET THE COMMAND
- SECTOR UNITS ▾
- SECTOR DEPARTMENTS ▾
- SECTOR RESERVE FORCES ▾
- LATEST NEWS ▾
- CONTINGENCY RESPONSE
- REGIONAL COMMITTEES
- PORT INFORMATION
- MARINER RESOURCES ▾
- HOMELAND SECURITY INFORMATION
- EMERGENCY PREPAREDNESS & HURRICANE RESOURCES ▾
- OMBUDSMAN
- LEARN MORE
- CONTACT WEBMASTER

## Marine Safety Information Bulletins (MSIBs)

MSIB Title	Date Published	PDF file
MSIB 016-26 Atlas V KA-06 RNA	4/24/2026	<a href="#">MSIB 016-26 Atlas V KA-06 RNA.pdf</a>
MSIB 017-26 Falcon Heavy Viasat 3F3 RNA	4/24/2026	<a href="#">MSIB 017-26 Falcon Heavy Viasat 3F3 RNA.pdf</a>
MSIB 065-25: PORT CONDITION FIVE	12/1/2025	<a href="#">PORT CONDITION V.pdf</a>



Page 1 of 1 First Previous Next Last



Homeland  
Security



# Weather Page

**NATIONAL WEATHER SERVICE**  
NATIONAL OCEANIC AND ATMOSPHERIC ADMINISTRATION

[HOME](#) [FORECAST](#) [PAST WEATHER](#) [SAFETY](#) [INFORMATION](#) [EDUCATION](#) [NEWS](#) [SEARCH](#) [ABOUT](#)

**News Headlines**

- [NWS JAX Daily Hazardous Weather Briefing](#)
- [Florida Tropical Training Week 2026](#)
- [Skywarn Storm Spotter Class Schedules for 2026](#)
- [Report Rainfall from Your Backyard! Join CoCoBaHS for "Rain Gauge Rally"](#)
- [Learn How to Prepare your Home for Wildfires](#)

[Additional Headlines](#)

**US Coast Guard - Sector Jacksonville - Weather Portal** Jacksonville, FL  
Weather.org > Jacksonville, FL > US Coast Guard - Sector Jacksonville - Weather Portal Weather Forecast Office

[Current Hazards](#) [Current Conditions](#) [Radar](#) [Forecasts](#) [Rivers and Lakes](#) [Climate and Past Weather](#) [Local Programs](#)

[Mayport](#) [Ponce Inlet](#) [Canaveral](#) [Interactive Map](#) [Sunrise/Sunset](#) [Radar/Sat](#)  
[High Profile Structures Forecast](#) [Analysis/Discussion](#) [C Night Mode](#)

**MAYPORT** OBS: KJAX | FORECAST: AMZ452


**JACKSONVILLE INT'L (KJAX)** - 10:00 AM  
Temp: **75°F** Wind: → W 5 KT  
**H: 92°F / L: 67°F**  
(Forecast)  
Vis: **10 SM** Ceiling: **FEW 060**

Coastal Stations	Time	Wind	Temp
<a href="#">Fernandina (KF3HB)</a>	9:55 AM	W 7 KT	75°F
<a href="#">Mayport NS (KNRB)</a>	8:52 AM	SSW 8 KT	74°F
<a href="#">St. Augustine (KSGJ)</a>	10:00 AM	WSW 10 KT	77°F

**Mayport Tides (MHHW):** High: 8:21 pm (0.116 ft) | Low: 1:37 pm (-4.96 ft)

**ACTIVE WARNINGS (AMZ452/454)**  
*No active marine warnings.*

**NEARSHORE FORECAST (AMZ452)**  
**TODAY:** South winds 5 to 10 knots, increasing to 10 to 15 knots this afternoon. Seas 3 to 4 feet, occasionally to 5 feet. Wave Detail: Southeast 3 feet at 5 seconds and east 3 feet at 10 seconds. Intra-coastal waters a moderate chop.  
**TONIGHT:** Southwest winds 10 to 15 knots, becoming west after midnight. Seas 3 to 4 feet, occasionally to 5 feet. Wave Detail: Southeast 3 feet at 5 seconds and east 3 feet at 11 seconds. Intra-coastal waters a moderate chop. A chance of showers and thunderstorms after midnight.  
[Read Marine Discussion »](#) [View 5-Day Forecast »](#)

**MAYPORT RIVER CAM (LIVE)**  
  
Switch Camera:  
[Mayport River](#) [St. Ponte Vedra](#) [St. Aug Historic](#)  
[Hammock Dunes](#) [Marineland](#)

**BUOY MYPF1 - MAYPORT**  
Wind: ↗ SW 9 KT G12 KT  
Temp: **Air: 74.8°F | Water: 71.2°F**  
Pressure: **1017.6 mb (30.05 inHg)**  
[View Station on NDBC Website](#)  
[Map of Florida NDBC locations](#)

[Back to Top](#)

**PONCE INLET** OBS: KDAB | FORECAST: AMZ550



Homeland Security



# Post-Storm Assessments

- Channel Assessments
- Essential ATON Assessments
- Infrastructure Assessments
- Assessment results will be discussed with the PCT to determine safe port opening procedures.
- Incident Action Plan – Annex M



Homeland  
Security



# Coast Guard Points of Contact

- LCDR Barton Nanney (Before 10 July)
  - Office: 904-714-7546
  - Email: [Barton.S.Nanney@uscg.mil](mailto:Barton.S.Nanney@uscg.mil)
- LT Mitchell Goebel (After 10 July)
  - Email: [Michelle.m.Goebel@uscg.mil](mailto:Michelle.m.Goebel@uscg.mil)
- LT Ace Conner (departing this summer)
  - Office: 904-714-7616
  - Email: [Avierre.J.Conner@uscg.mil](mailto:Avierre.J.Conner@uscg.mil)
- Sector Jacksonville Incident Management Team
  - Phone: 206-815-7026



Homeland  
Security



# Questions?



Homeland  
Security



# 2026 FWC Hurricane Season

---





# At Risk Vessels

---

- F.S. 327.4107
  - The vessel is taking on or has taken on water without an effective means to dewater.
  - Spaces on the vessel that are designed to be enclosed are incapable of being sealed off or remain open to the elements for extended periods of time.
  - The vessel has broken loose or is in danger of breaking loose from its anchor.
  - The vessel is listing due to water intrusion.
  - The vessel does not have an effective means of propulsion for safe navigation.
  - The vessel is tied to an unlawful or unpermitted structure or mooring.
  - A person who anchors or moors a vessel at risk of becoming derelict on the waters of this state or allows such a vessel to occupy such waters commits a noncriminal infraction.



# Derelict Vessels

---

- F.S. 832.11
  - In a wrecked, junked, or substantially dismantled condition upon any waters of this state.
    - Wrecked - sunken; aground without the ability to extricate itself absent mechanical assistance.
    - Junked - substantially stripped of vessel components, if vessel components have substantially degraded or been destroyed.
    - Substantially Dismantled – 2/3 vessel systems are missing, compromised, incomplete, inoperable, or broken.
      - Steering
      - Propulsion
      - Exterior Hull Integrity



# Pre - Storm

---

- 72 Hours Out
  - Officers survey waterways and collect vessel / owner information.
- 48 Hours Out
  - All vessels (except 2 Quick Response) removed from waters and staged.
- 24 Hours Out
  - Quick Response Vessels pulled and staged.



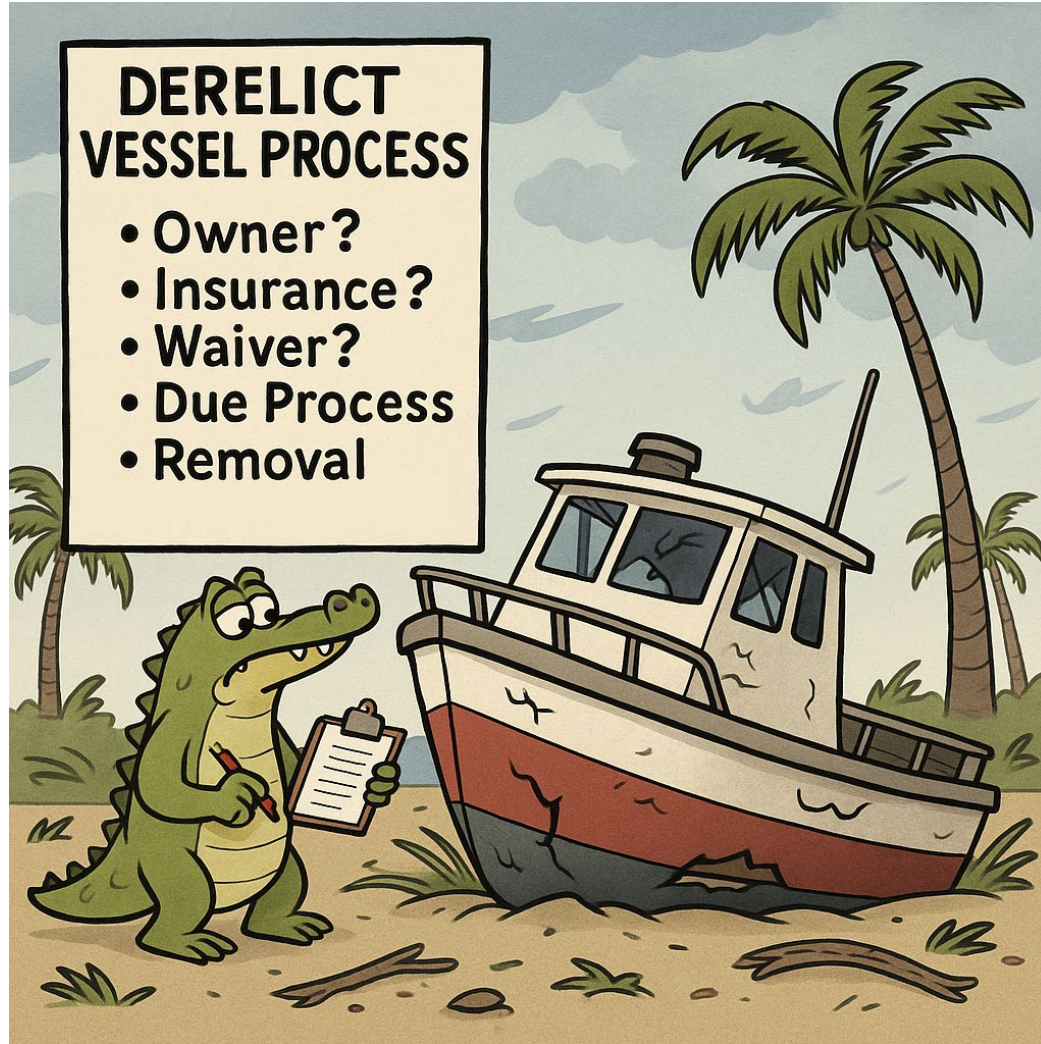
# Post - Storm

---

- Variables.
- Conduct survey of affected areas.
- Initiate DV process.
- Deploy additional resources if there is a significant impact.

## DERELICT VESSEL PROCESS

- Owner?
- Insurance?
- Waiver?
- Due Process
- Removal



# Derelict Interactive Map

---



Questions?

---



# Contact

---

- FWC Dispatch 407-275-4150
- Lt. Ray Cybula
  - State: 321.317.0825
  - Personal: 321.537.7199
  - [Raymond.Cybula@MyFWC.Com](mailto:Raymond.Cybula@MyFWC.Com)



# Hurricane Season Briefing



**Prepared**

**Proactive**

**Professional**

# Pre Storm Preparations

72-96 hours pre-landfall

- Prepare Stations, apparatus, and equipment
- Ensure any possible projectiles around our stations and training grounds are secured
- Ensure all apparatus, equipment are in working order and fuel convaults are full
- Order any additional supplies that would be needed throughout the duration of the storm
- Open Communications with the Canaveral Port Authority



Prepared

Proactive

Professional

# Pre Storm Preparations

## 48 hours pre-landfall

- **Assign shift personnel to stations for the duration of the storm**
  - Those personnel will have adequate time to secure their homes before the storm
  - Two full shift assignments will staff each station
  - Remaining shift will be sent home and subject to recall as soon as it is safe to return
- **Canaveral Fire Boat 1 and Fire Boat 2 will be moved to safe locations based on the storms path of travel**



**Prepared**

**Proactive**

**Professional**

# Pre Storm Preparations

## 24 hours pre-landfall



- **Non essential apparatus and equipment moved to a safe staging location on the mainland**
  - All equipment, staff vehicles, or back up apparatus that are not expected to be used during or immediately after the storm, will be evacuated to a safe facility inland.
- **Assist the general population if required**
  - If possible, personnel will help citizens and businesses make any last minute preparations for the storm



**Prepared**

**Proactive**

**Professional**

# Pre Storm Preparations

## 12 hours pre-landfall



- Personnel report to their station locations
  - Each station will be staffed with 2 full shifts of personnel and one Chief Officer
- Personnel will rotate between work/rest cycles to maintain operational readiness
- Stations will be locked down and responses stop when winds exceed 45MPH



**Prepared**

**Proactive**

**Professional**

# Pre Storm Preparations

## Post Storm



- Post storm operations will begin once the storm has passed and winds fall below 45MPH
- Hazard and damage assessments will be completed in Port Canaveral and the City of Cape Canaveral
- Canaveral Fire Rescue will assign a representative to the IMOC to assist with communication between CPA, USCG, BCSO, and CFR.
- Mitigate hazards as necessary



Prepared

Proactive

Professional

# Past Hurricane Responses

## 2008 Tropical Storm Fay



- Personnel went door to door in high flooded areas in the City of Cape Canaveral to ensure everyone who didn't evacuate were safe.
- Evacuated several families to safety from highly flooded neighborhoods



**Prepared**

**Proactive**

**Professional**

# Past Hurricane Responses

## 2016 Hurricane Matthew



- While performing post storm damage and hazard assessments with USCG, a large metal sign fell and struck a member of the USCG on the head
- Advanced life saving measures were immediately taken on scene
- Canaveral Fire Rescue personnel transported the patient in a staff vehicle to the hospital, where he was able to receive definitive care due to BCFR not being able to transport over the bridges because of high winds
- This patient made a full recovery



Prepared

Proactive

Professional

# Past Hurricane Responses

## 2017 Hurricane Irma



- **Damage to City of Cocoa water mains caused Seaport Canaveral and Transmontane to lose fire protection systems, making them unable to load fuel on to fuel trucks**
- **Canaveral Fire Rescue worked around the clock to provide fire protection at both facilities to ensure the safe distribution of fuel that was needed throughout the State of Florida**



**Prepared**

**Proactive**

**Professional**

# Past Hurricane Responses

2018 Hurricane Michael Strike Team  
2022 Hurricane Ian Strike Team



- Canaveral Fire Rescue has sent multiple personnel on Strike Teams to other areas in the State that have been devastated by Hurricanes to assist other Fire Departments that need help
- Many of these personnel have fought numerous structure fires and assisted in rescue efforts while deployed
- These deployments help build bonds with other departments that would help our community in the same way we were able to provide help to theirs



Prepared

Proactive

Professional



# Brevard County Sheriff's Office

## Port Canaveral

### USCG Heavy Weather Overview

Commander Brian Neal  
Canaveral Precinct



# Pre-Storm

(72-hours)

- Designate Storm Coordinator
- Resource Accountability
- Secure Physical Assets/Structures
- MSO's assists CPA
- Marine Unit – Active Patrols
- Emergency Mgt. Meetings



# Pre-Storm

(48-hours)

- Staff Preparations – Emergency Plan
- Directed Patrols of Secured Areas
- Marine Unit – Active Patrols
- Emergency Mgt. Meetings



# Pre-Storm

(24-hours)

- A / B Staffing if Necessary
- MSO's Replaced with Deputies
- Marine Unit – Vessel Evacuations
- Non-Essential Equipment Secured
- Emergency Mgt. Meetings



# Storm Landfall

- Law Enforcement Response Determined by Incident Cmdr.
- Command Post at IMOC
- Personnel at Canaveral Precinct & IMOC
- Coordinate Post Storm Response



# Post-Storm

- Emergency Mgt. Meetings
- Re-entry Traffic Control
- Assist CCFR & CPA with Hazard Assessments
- Assessment of Secured Areas
- Marine Unit – Assist USCG with Waterway Assessments



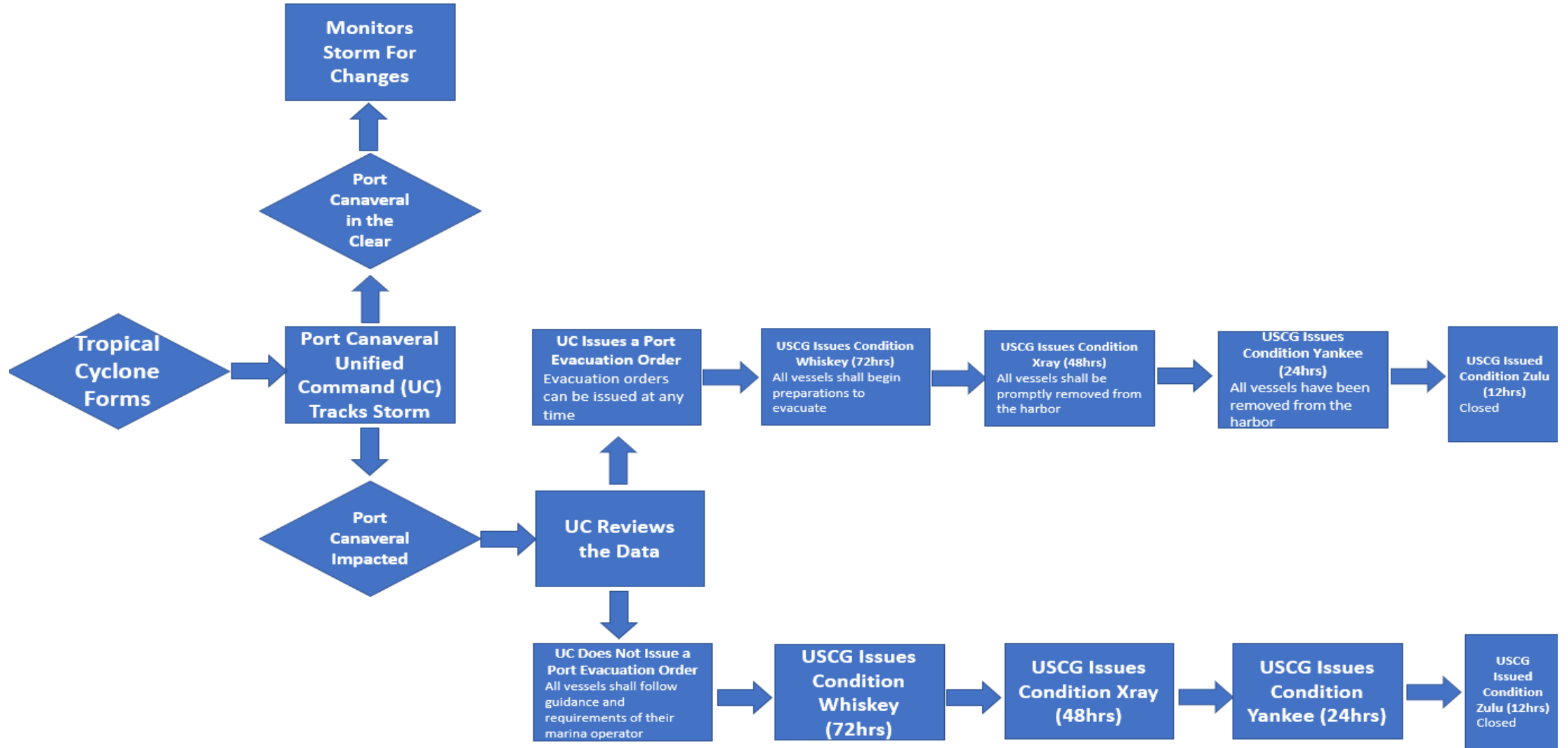
# Port Canaveral – 2026 Hurricane Season

# Planning and Mitigation (Doing This Now)

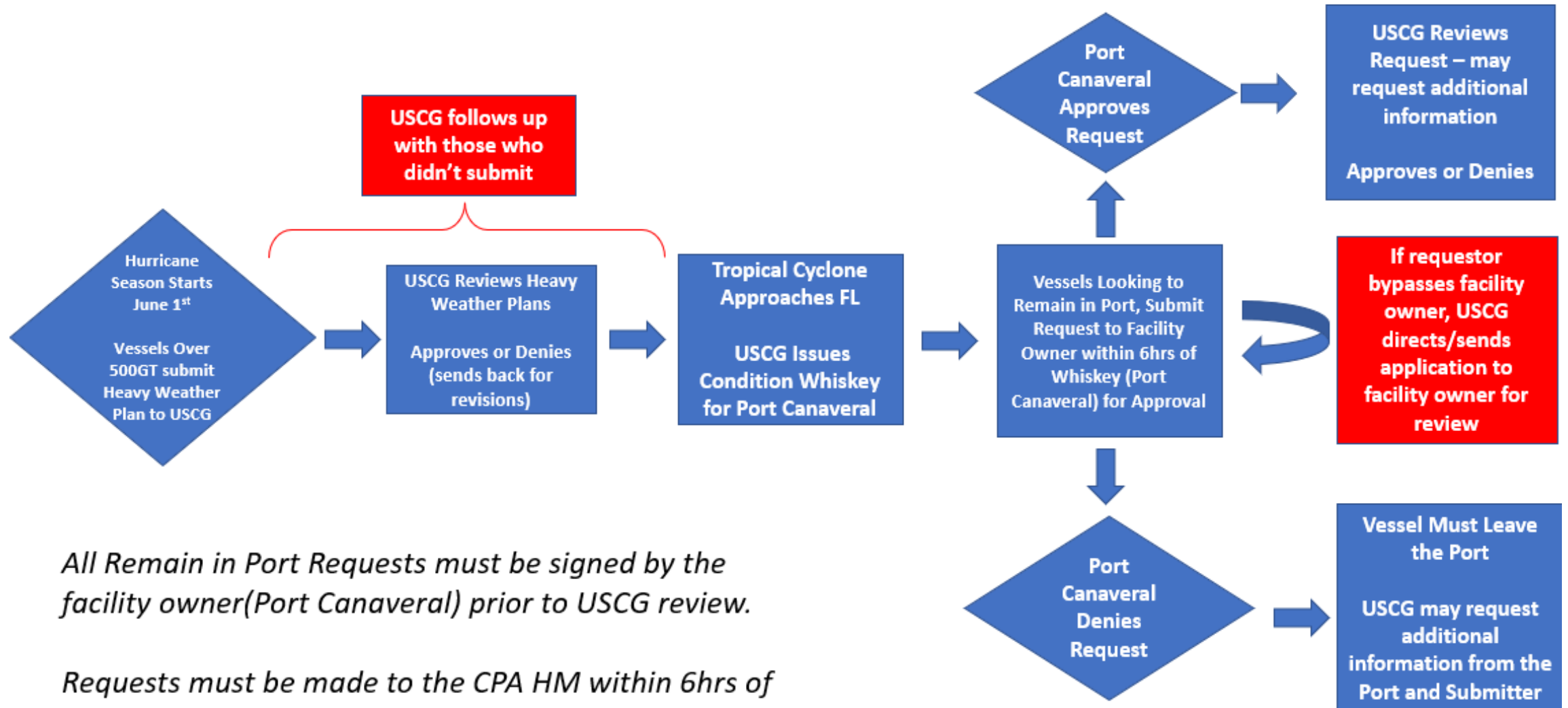
- Monthly hazard surveys of all Port facilities start June and continue through Nov
  - Get your facility plan ready – clear/organize sites now and update contact info
- Identify and secure staging locations
  - Survey vessel for post-storm channel assessment
  - Incident response equipment
- Order equipment/supplies and stockpile consumables
  - Food, water, and portable toilets
- Update Mutual Aid agreements
- Ensure all vessels aware of evacuation requirements
  - Commercial fishing fleet to Barge Canal
  - Recreational boats removed from Port Canaveral harbor
  - Over 500GT out to sea (USCG)
  - Under 500GT, out to sea or Remain in Port Request (CPA and USCG)



# Marina Evacuation Flowchart



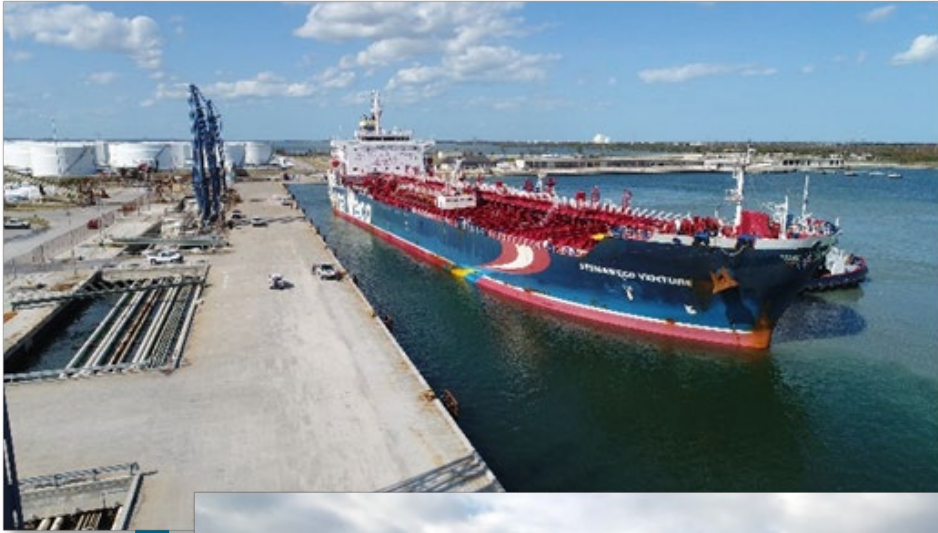
# Remain in Port Request Flow Chart



*All Remain in Port Requests must be signed by the facility owner(Port Canaveral) prior to USCG review.*

*Requests must be made to the CPA HM within 6hrs of the issuance of Whiskey.*

# Objectives / Priorities Pre-storm



- Activate heavy weather plan and Unified Command
  - Coordinate with NWS, Brevard EM, USCG Sec Jax, and Port Community
- Track storm – UC discuss vessel evacuations
- Ensure Port is clear of debris
- Phased closure of Port Canaveral businesses
- Continuous fuel deliveries until no longer safe
- Complete shutdown of all operations at Condition Zulu
- “Ride Out Team” (Sheriff’s Dept. & Fire Rescue)
- Notify Critical Return Members of timing and check-in location

# Critical Return List and Notifications

- Critical Return Members
  - Activated based on responsibilities
    - Damage Assessment Team
    - Alpha, Bravo and Bravo1
- Everbridge Notifications
  - Critical Return Members
  - CPA and stakeholder staff
- Social Media, Website, and Hotline
  - Port Community
  - Hotline - #321-394-3411

2:34

<

88911 >

TO MEDICAL EMERGENCY. THE new time is 09:00. Update to follow.

Update:

Sunday 8:05 AM

At 08:00 per Sgt. Osborne

CT 10, MSC Seashore - A suspicious device was observed in the restroom on floor six of the cruise ship. Preliminary investigation believe device to be non-hazardous, however BCSO EOD unit responding for further examination. Debark continuing as normal. Limited truck provisioning at this time. Update to follow.

Reply with YES to confirm receipt.

Yes

Reply

Alert

B

BCSO <noreply@everbridge.net>  
To ✓ Cory Dibble, CEM

At 08:00 per Sgt. Osborne

CT 10, MSC Seashore - The item has been cleared by EOD units. Operations resume as normal.

Reply with YES to confirm receipt.

[Please click here to acknowledge receipt of this message](#)

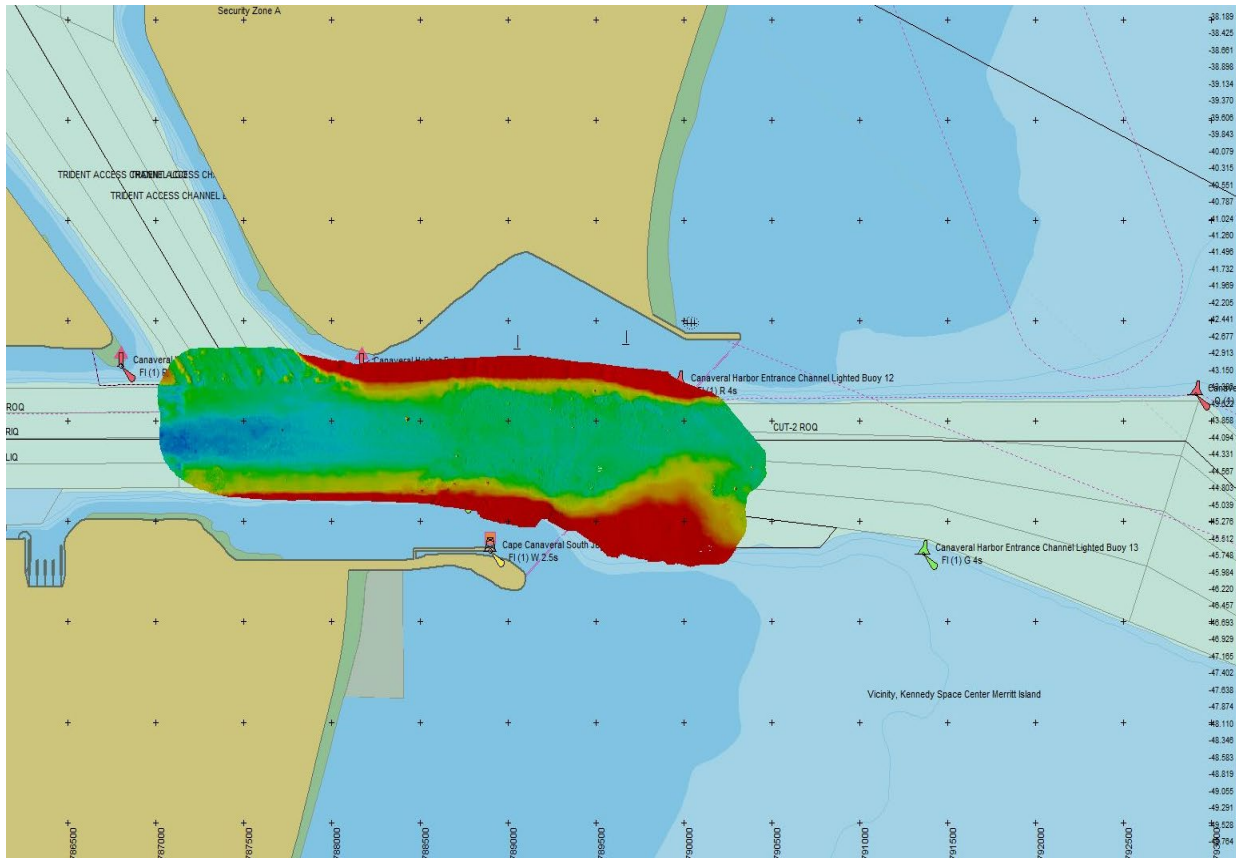
Text Message



At 08:00 per Sgt. Osborne

CT 10, MSC Seashore - The item has been cleared by EOD units. Operations resume as normal.

# Objectives / Priorities Post-storm



- Conduct life safety/windshield assessment
- Recall Damage Assessment Team
  - Critical Return List members will be phased
- **Dispatch response equipment - Clear channel first**
- Restore water, power, sewer services ASAP
- Receive fuel ships
  - Restore fuel truck deliveries to Central Florida
- Receive cruise ships for passenger operations
- Survey needs within Port community
- Recall commercial and recreational vessels



**Be proactive and not reactive**  
**Port resiliency is a community approach!**

**Thank You**